

Recombinant Mouse KLK8 Protein (33-260 aa), His-tagged

Cat. No. KLK8-2157M Lot. No. (See product label)

SPECIFICATION

Product Overview	Recombinant Mouse KLK8 Protein (33-260 aa) is produced by Yeast expression system. This protein is fused with a 6xHis tag at the N-terminal. Research Area: Signal Transduction. Protein Description: Full Length of Mature Protein.
Species	Mouse
Source	Yeast
ProteinLength	33-260 aa
Description	Serine protease which is capable of degrading a number of proteins such as casein, fibrinogen, kininogen, fibronectin and collagen type IV. Also cleaves L1CAM in response to increased neural activity. Induces neurite outgrowth and fasciculation of cultured hippocampal neurons. Plays a role in the formation and maturation of orphan and small synaptic boutons in the Schaffer-collateral pathway, regulates Schaffer-collateral long-term potentiation in the hippocampus and is required for memory acquisition and synaptic plasticity. Involved in skin desquamation and keratinocyte proliferation. Plays a role in the secondary phase of pathogenesis following spinal cord injury.
Form	Tris-based buffer,50% glycerol
Molecular Mass	27.1 kDa
AA Sequence	ILEGRECIPHSQPWQAALFQGERLICGGVLVGDWRVLTAAHCKKQKYSVRLGDHSL

 Tel: 1-631-559-9269 1-516-512-3133

 Email: info@creative-biomart.com  Fax: 1-631-938-8127

 45-1 Ramsey Road, Shirley, NY 11967, USA

QSRDQPEQEIQVAQSIQHPCYNNSNPEDHSHDIMLIRLQNSANLGDKVKPVQLANLC
 PKVGQKCIISGWGTVTSPQENFPNTLNCAEVKIYSQNK CERAYPGKITEGMVCAGSS
 NGADTCQGDSGGPLVCDGMLQGITSWGS DPCGKPEKPGVYTKICRYTTWIKKTM D
 NRD

Purity > 90% as determined by SDS-PAGE.

Notes Repeated freezing and thawing is not recommended. Store working aliquots at 4 centigrade for up to one week.

Storage The shelf life is related to many factors, storage state, buffer ingredients, storage temperature and the stability of the protein itself. Generally, the shelf life of liquid form is 6 months at -20 centigrade/-80 centigrade. The shelf life of lyophilized form is 12 months at -20 centigrade/-80 centigrade.

Concentration A hardcopy of COA will be sent along with the products. Please refer to it for detailed information.

GENE INFORMATION

Gene Name [Klk8 kallikrein related-peptidase 8 \[Mus musculus \]](#)

Official Symbol [KLK8](#)

Synonyms KLK8; kallikrein-8; NP; mK8; BSP1; Nrpn; Prss19;

Gene ID [259277](#)

mRNA Refseq [NM_008940](#)

Protein Refseq [NP_032966](#)

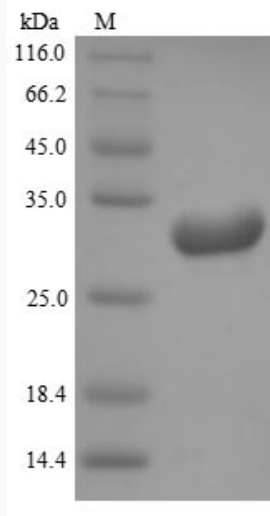
 Tel: 1-631-559-9269 1-516-512-3133

 Email: info@creative-biomart.com  Fax: 1-631-938-8127

 45-1 Ramsey Road, Shirley, NY 11967, USA

UniProt ID

Q61955



(Tris-Glycine gel) Discontinuous SDS-PAGE (reduced) with 5% enrichment gel and 15% separation gel.

 Tel: 1-631-559-9269 1-516-512-3133

 Email: info@creative-biomart.com  Fax: 1-631-938-8127

 45-1 Ramsey Road, Shirley, NY 11967, USA