

## Recombinant Human KLK8 Protein (Gln29-GLy260), C-His tagged

Cat. No. KLK8-3464H Lot. No. (See product label)

### SPECIFICATION

<b>Product Overview</b>	Recombinant human KLK8 (Gln29-GLy260) protein fused with the C-terminal His tag was expressed in Mammalian cells.
<b>Species</b>	Human
<b>Source</b>	Mammalian Cells
<b>ProteinLength</b>	Gln29-GLy260
<b>Molecular Mass</b>	25.52 kDa
<b>Purity</b>	>90 % as determined by SDS-PAGE.
<b>Notes</b>	For research use only.
<b>Storage</b>	Use a manual defrost freezer and avoid repeated freeze thaw cycles. Store at 2 to 8 centigrade for one week. Store at -20 to -80 centigrade for twelve months from the date of receipt.
<b>Storage Buffer</b>	Supplied as solution form in PBS or lyophilized from PBS.
<b>Reconstitution</b>	Reconstitute in sterile water for a stock solution.
<b>Shipping</b>	In general, proteins are provided as lyophilized powder/frozen liquid. They are

 Tel: 1-631-559-9269 1-516-512-3133

 Email: [info@creative-biomart.com](mailto:info@creative-biomart.com)  Fax: 1-631-938-8127

 45-1 Ramsey Road, Shirley, NY 11967, USA

shipped out with dry ice/blue ice unless customers require otherwise.

## GENE INFORMATION

**Gene Name** [KLK8 kallikrein-related peptidase 8 \[ Homo sapiens \(human\) \]](#)

**Official Symbol** [KLK8](#)

**Synonyms** [KLK8](#); kallikrein-related peptidase 8; kallikrein 8 (neuropsin/ovasin), PRSS19; kallikrein-8; HNP; neuropsin; ovasin; TADG14; hK8; neuropsin type 1; neuropsin type 2; serine protease 19; KLK8 protein type 1; KLK8 protein type 2; serine protease TADG-14; tumor-associated differentially expressed gene 14 protein; NP; NRPN; PRSS19;

**Gene ID** [11202](#)

**mRNA Refseq** [NM\\_007196](#)

**Protein Refseq** [NP\\_009127](#)

**MIM** [605644](#)

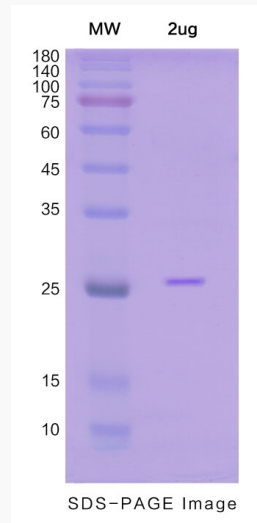
**UniProt ID** [O60259](#)

 Tel: 1-631-559-9269 1-516-512-3133

 Email: [info@creative-biomart.com](mailto:info@creative-biomart.com)  Fax: 1-631-938-8127

 45-1 Ramsey Road, Shirley, NY 11967, USA

**SDS-PAGE**



 Tel: 1-631-559-9269 1-516-512-3133

 Email: [info@creative-biomart.com](mailto:info@creative-biomart.com)  Fax: 1-631-938-8127

 45-1 Ramsey Road, Shirley, NY 11967, USA