

## Recombinant Human KLK8 Protein (Gln29-Gly260), N-His tagged

Cat. No. KLK8-3968H    Lot. No. (See product label)

### SPECIFICATION

<b>Product Overview</b>	Recombinant human KLK8 (Gln29-Gly260) fused with the N-His tag was expressed in E. coli.
<b>Species</b>	Human
<b>Source</b>	E.coli
<b>ProteinLength</b>	Gln29-Gly260
<b>Form</b>	Lyophilized powder/frozen liquid
<b>Molecular Mass</b>	27.27 kDa
<b>Purity</b>	>90% as determined by SDS-PAGE.
<b>Notes</b>	For research use only.
<b>Storage</b>	Use a manual defrost freezer and avoid repeated freeze thaw cycles. Store at 2 to 8 centigrade for one week. Store at -20 to -80 centigrade for twelve months from the date of receipt.
<b>Storage Buffer</b>	0.01M PBS, pH 7.4, 0.02% NLS
<b>Reconstitution</b>	Reconstitute in sterile water for a stock solution.

 Tel: 1-631-559-9269    1-516-512-3133

 Email: [info@creative-biomart.com](mailto:info@creative-biomart.com)     Fax: 1-631-938-8127

 45-1 Ramsey Road, Shirley, NY 11967, USA

**Shipping**

They are shipped out with dry ice/blue ice unless customers require otherwise.

**GENE INFORMATION**
**Gene Name**

KLK8 kallikrein-related peptidase 8 [ Homo sapiens (human) ]

**Official Symbol**

KLK8

**Synonyms**

KLK8; kallikrein-related peptidase 8; kallikrein 8 (neuropsin/ovasin), PRSS19; kallikrein-8; HNP; neuropsin; ovasin; TADG14; hK8; neuropsin type 1; neuropsin type 2; serine protease 19; KLK8 protein type 1; KLK8 protein type 2; serine protease TADG-14; tumor-associated differentially expressed gene 14 protein; NP; NRPN; PRSS19;

**Gene ID**

11202

**mRNA Refseq**

NM\_007196

**Protein Refseq**

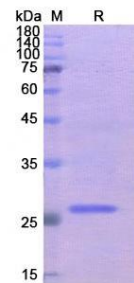
NP\_009127

**MIM**

605644

**UniProt ID**

O60259

**SDS-PAGE**


Tel: 1-631-559-9269 1-516-512-3133

Email: [info@creative-biomart.com](mailto:info@creative-biomart.com) Fax: 1-631-938-8127

45-1 Ramsey Road, Shirley, NY 11967, USA