

Recombinant Human KLK9 Protein, Myc/DDK-tagged, C13 and N15-labeled

Cat. No. KLK9-1204H **Lot. No.** (See product label)

SPECIFICATION

Product Overview	KLK9 MS Standard C13 and N15-labeled recombinant protein (NP_036447) with a C-terminal MYC/DDK tag, was expressed in HEK293 cells.
Species	Human
Source	HEK293
Description	The protein encoded by this gene is a kallikrein-related serine protease. This gene is activated by steroid hormones in a human breast cancer cell line, making it a good marker for cancer detection. The encoded protein is found primarily in the cytoplasm.
Molecular Mass	27.3 kDa
AA Sequence	MKLGLLCALLSLLAGHWADTRAIGAEECRPNSQPWQAGLFHLTRLFCGATLISDR WLLTAAHCRKPYLWVRLGEHHLWKWEGPEQLFRVTDFFPHPGFNKDLSANDHND DIMLIRLPRQARLSPAVQPLNLSQTCVSPGMQCLISGWGAVSSPKALFPVTLQCANI SILENKLCHWAYPGHISDSMLCAGLWEGGRGSCQGDSGGPLVCNGTLAGVVSSGA EPCSRPRRPAVYTSVCHYLDWIQEIMENTRTRPLEQKLISEEDLAANDILDYKDDDD KV
Purity	> 80% as determined by SDS-PAGE and Coomassie blue staining
Stability	Stable for 3 months from receipt of products under proper storage and handling conditions.

 Tel: 1-631-559-9269 1-516-512-3133

 Email: info@creative-biomart.com  Fax: 1-631-938-8127

 45-1 Ramsey Road, Shirley, NY 11967, USA

Storage	Store at -80 centigrade. Avoid repeated freeze-thaw cycles.
----------------	---

Concentration	50 µg/mL as determined by BCA
----------------------	-------------------------------

Storage Buffer	100 mM glycine, 25 mM Tris-HCl, pH 7.3.
-----------------------	---

GENE INFORMATION

Gene Name	KLK9 kallikrein-related peptidase 9 [Homo sapiens (human)]
------------------	--

Official Symbol	KLK9
------------------------	------

Synonyms	KLK9; kallikrein-related peptidase 9; kallikrein 9; kallikrein-9; KLK L3; kallikrein-like protein 3; KLKL3; KLK-L3; MGC50513;
-----------------	---

Gene ID	284366
----------------	--------

mRNA Refseq	NM_012315
--------------------	-----------

Protein Refseq	NP_036447
-----------------------	-----------

MIM	605504
------------	--------

UniProt ID	Q9UKQ9
-------------------	--------

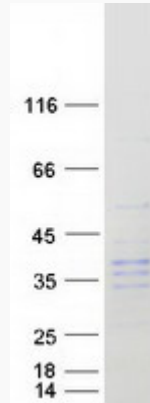
 Tel: 1-631-559-9269 1-516-512-3133

 Email: info@creative-biomart.com  Fax: 1-631-938-8127

 45-1 Ramsey Road, Shirley, NY 11967, USA



SDS-PAGE



Tel: 1-631-559-9269 1-516-512-3133

Email: info@creative-biomart.com Fax: 1-631-938-8127

45-1 Ramsey Road, Shirley, NY 11967, USA