

Recombinant Human KLK9 Protein (His16-Asn250), N-His tagged

Cat. No. KLK9-4210H Lot. No. (See product label)

SPECIFICATION

Product Overview	Recombinant human KLK9 (His16-Asn250) fused with the N-His tag was expressed in E. coli.
Species	Human
Source	E.coli
ProteinLength	His16-Asn250
Form	Lyophilized powder/frozen liquid
Molecular Mass	28.32 kDa
Purity	>90% as determined by SDS-PAGE.
Notes	For research use only.
Storage	Use a manual defrost freezer and avoid repeated freeze thaw cycles. Store at 2 to 8 centigrade for one week. Store at -20 to -80 centigrade for twelve months from the date of receipt.
Storage Buffer	0.01M PBS, pH 7.4, 0.02% NLS
Reconstitution	Reconstitute in sterile water for a stock solution.

 Tel: 1-631-559-9269 1-516-512-3133

 Email: info@creative-biomart.com  Fax: 1-631-938-8127

 45-1 Ramsey Road, Shirley, NY 11967, USA

Shipping

They are shipped out with dry ice/blue ice unless customers require otherwise.

GENE INFORMATION
Gene Name

KLK9 kallikrein-related peptidase 9 [Homo sapiens (human)]

Official Symbol

KLK9

Synonyms

KLK9; kallikrein-related peptidase 9; kallikrein 9; kallikrein-9; KLK L3; kallikrein-like protein 3; KLKL3; KLK-L3; MGC50513;

Gene ID

284366

mRNA Refseq

NM_012315

Protein Refseq

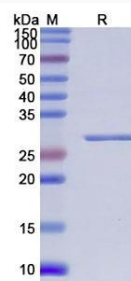
NP_036447

MIM

605504

UniProt ID

Q9UKQ9

SDS-PAGE


Tel: 1-631-559-9269 1-516-512-3133

Email: info@creative-biomart.com Fax: 1-631-938-8127

45-1 Ramsey Road, Shirley, NY 11967, USA