

Recombinant Human KLK9 Protein, GST-tagged

Cat. No. KLK9-4926H **Lot. No.** (See product label)

SPECIFICATION

| | |
|-------------------------|---|
| Product Overview | Human KLK9 full-length ORF (NP_036447.1, 1 a.a. - 250 a.a.) recombinant protein with GST-tag at N-terminal. |
| Species | Human |
| Source | Wheat Germ |
| Description | KLK9 belongs to the kallikrein subgroup of serine proteases, which have diverse physiologic functions in many tissues. For background information on kallikreins, see MIM 147960.[supplied by OMIM |
| Molecular Mass | 53.9 kDa |
| AA Sequence | MKLGLLCALLSLLAGHWADTRAIGAEECRPNSQPWQAGLFHLTRLFCGATLISDR WLLTAAHCRKPYLWVRLGEHHLWKWEGPEQLFRVTDFPHPGFNKDLSANDHND DIMLIRLPRQARLSPAVQPLNLSQTCVSPGMQCLISGWGAVSSPKALFPVTLQCANI SILENKLCHWAYPGHISDSMLCAGLWEGGRGSCQGDSGGPLVCNGTLAGVVSSGGA EPCSRPRRPAVYTSVCHYLDWIQEIMEN |
| Applications | Enzyme-linked Immunoabsorbent Assay Western Blot (Recombinant protein) Antibody Production Protein Array |
| Notes | Best use within three months from the date of receipt of this protein. |

 Tel: 1-631-559-9269 1-516-512-3133

 Email: info@creative-biomart.com  Fax: 1-631-938-8127

 45-1 Ramsey Road, Shirley, NY 11967, USA

Storage Store at -80 centigrade. Aliquot to avoid repeated freezing and thawing.

Storage Buffer 50 mM Tris-HCl, 10 mM reduced Glutathione, pH=8.0 in the elution buffer.

GENE INFORMATION

Gene Name [KLK9 kallikrein-related peptidase 9 \[Homo sapiens \]](#)

Official Symbol [KLK9](#)

Synonyms KLK9; kallikrein-related peptidase 9; kallikrein 9; kallikrein-9; KLK L3; kallikrein-like protein 3; KLKL3; KLK-L3; MGC50513;

Gene ID [284366](#)

mRNA Refseq [NM_012315](#)

Protein Refseq [NP_036447](#)

MIM [605504](#)

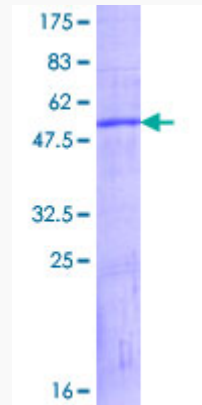
UniProt ID [Q9UKQ9](#)

 Tel: 1-631-559-9269 1-516-512-3133

 Email: info@creative-biomart.com  Fax: 1-631-938-8127

 45-1 Ramsey Road, Shirley, NY 11967, USA

**Quality Control
Testing**



12.5% SDS-PAGE Stained with Coomassie Blue

 Tel: 1-631-559-9269 1-516-512-3133

 Email: info@creative-biomart.com  Fax: 1-631-938-8127

 45-1 Ramsey Road, Shirley, NY 11967, USA