

## Recombinant Human KLK9 protein(16-250aa), hFc-tagged

Cat. No. KLK9-4958H Lot. No. (See product label)

### SPECIFICATION

<b>Product Overview</b>	Recombinant Human KLK9 protein(Q9UKQ9)(16-250aa), fused with C-terminal hFc tag, was expressed in HEK293.
<b>Species</b>	Human
<b>Source</b>	HEK293
<b>ProteinLength</b>	16-250aa
<b>Form</b>	If the delivery form is liquid, the default storage buffer is Tris/PBS-based buffer, 5%-50% glycerol. If the delivery form is lyophilized powder, the buffer before lyophilization is Tris/PBS-based buffer, 6% Trehalose, pH 8.0.
<b>Molecular Mass</b>	49.2 kDa
<b>Purity</b>	Greater than 85% as determined by SDS-PAGE.
<b>Storage</b>	Store at -20°C/-80°C upon receipt, aliquoting is necessary for mutiple use. Avoid repeated freeze-thaw cycles.
<b>Reconstitution</b>	We recommend that this vial be briefly centrifuged prior to opening to bring the contents to the bottom. Please reconstitute protein in deionized sterile water to a concentration of 0.1-1.0 mg/mL. We recommend to add 5-50% of glycerol (final concentration) and aliquot for long-term storage at -20°C/-80°C.

 Tel: 1-631-559-9269 1-516-512-3133

 Email: [info@creative-biomart.com](mailto:info@creative-biomart.com)  Fax: 1-631-938-8127

 45-1 Ramsey Road, Shirley, NY 11967, USA

**AA Sequence**

HGWADTRAIGAEECRPNSQPWQAGLFLTRLFcGATLISDRWLLTAAHCRKPYLWV  
RLGEHHLWKWEGPEQLFRVTDFFPHPGFNKDLSANDHNDDIMLIRLPRQARLSPAV  
QPLNLSQTCVSPGMQCLISGWGAVSSPKALFPVTLQCANISILENKLCHWAYPGHIS  
DSMLCAGLWEG

**GENE INFORMATION**

**Gene Name** [KLK9 kallikrein-related peptidase 9 \[ Homo sapiens \]](#)

**Official Symbol** [KLK9](#)

**Synonyms**

KLK9; kallikrein-related peptidase 9; kallikrein 9; kallikrein-9; KLK L3; kallikrein-like protein 3; KLKL3; KLK-L3; MGC50513;

**Gene ID** [284366](#)

**mRNA Refseq** [NM\\_012315](#)

**Protein Refseq** [NP\\_036447](#)

**MIM** [605504](#)

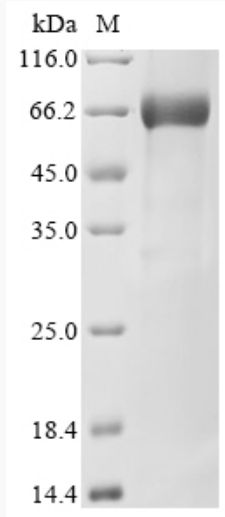
**UniProt ID** [Q9UKQ9](#)

 Tel: 1-631-559-9269 1-516-512-3133

 Email: [info@creative-biomart.com](mailto:info@creative-biomart.com)  Fax: 1-631-938-8127

 45-1 Ramsey Road, Shirley, NY 11967, USA

**SDS-PAGE**



 Tel: 1-631-559-9269 1-516-512-3133

 Email: [info@creative-biomart.com](mailto:info@creative-biomart.com)  Fax: 1-631-938-8127

 45-1 Ramsey Road, Shirley, NY 11967, USA