

Recombinant Human KLK9 Protein, His-tagged

Cat. No. KLK9-609H **Lot. No.** (See product label)

SPECIFICATION

| | |
|-------------------------|--|
| Product Overview | Recombinant Human KLK9(Met1~Asn250) fused with His tag at N-terminal was expressed in E. coli. |
| Species | Human |
| Source | E.coli |
| ProteinLength | Met1~Asn250 |
| Description | The KLK9 gene is immediately upstream of the KLK8 gene. There are a few transcripts (DQ267419, DQ267420, AY566267, and BC040887) that span the gap between these two genes and which suggest the presence of a bicistronic transcript. However, there is no published support for that, so they will continue to be represented as separate genes. |
| Form | PBS, pH7.4, containing 0.01% SKL, 1mM DTT, 5% Trehalose and Proclin300. |
| Molecular Mass | 34.9kDa |
| Identity | Reconstitute in PBS or others |
| Endotoxin | <1.0EU per 1g (determined by the LAL method) |
| Purity | > 90% |

 Tel: 1-631-559-9269 1-516-512-3133

 Email: info@creative-biomart.com  Fax: 1-631-938-8127

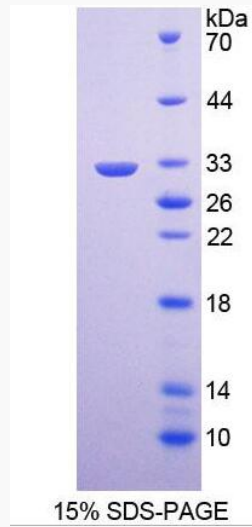
 45-1 Ramsey Road, Shirley, NY 11967, USA

| | |
|-------------------------|--|
| Applications | Positive Control; Immunogen; SDS-PAGE; WB. If bio-activity of the protein is needed, please check active protein |
| Stability | The thermal stability is described by the loss rate. The loss rate was determined by accelerated thermal degradation test, that is, incubate the protein at 37 centigrade for 48h, and no obvious degradation and precipitation were observed. The loss rate is less than 5% within the expiration date under appropriate storage condition. |
| Storage | Avoid repeated freeze/thaw cycles. Store at 2-8 centigrade for one month. Aliquot and store at -80 centigrade for 12 months. |
| Reconstitution | Reconstitute in PBS or others |
| GENE INFORMATION | |
| Gene Name | KLK9 kallikrein-related peptidase 9 [Homo sapiens] |
| Official Symbol | KLK9 |
| Synonyms | KLK9; kallikrein-related peptidase 9; kallikrein 9; kallikrein-9; KLK L3; kallikrein-like protein 3; KLKL3; KLK-L3; MGC50513; |
| Gene ID | 284366 |
| mRNA Refseq | NM_012315 |
| Protein Refseq | NP_036447 |
| MIM | 605504 |
| UniProt ID | Q9UKQ9 |

 Tel: 1-631-559-9269 1-516-512-3133

 Email: info@creative-biomart.com  Fax: 1-631-938-8127

 45-1 Ramsey Road, Shirley, NY 11967, USA



Tel: 1-631-559-9269 1-516-512-3133

Email: info@creative-biomart.com Fax: 1-631-938-8127

45-1 Ramsey Road, Shirley, NY 11967, USA