

Recombinant Rat KLKB1 Protein, His-tagged

Cat. No. KLKB1-1267R **Lot. No.** (See product label)

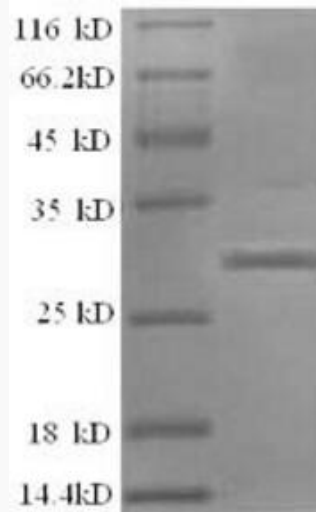
SPECIFICATION

Product Overview	Recombinant Rat KLKB1 Protein (391-638aa) was expressed in Yeast with N-terminal His tag.
Species	Rat
Source	Yeast
ProteinLength	391-638 a.a.
Form	Tris-based buffer, 50% glycerol.
Molecular Mass	29.8 kDa
AA Sequence	IVGGTNSSLGEWPWQVSLQVKLVSQNHMCGGSIIGRQWILTAAHCFDGIYPDVWR IYGGILNLSEITNK TPFSSIKELIIHQKYKMSEGSYDIALIKLQTPLNYTEFQKPICLPSKADTNTIYTNCWVT GWGYTKERGE TQNILQKATIPLVPNEECQKKYRDYVITKQMICAGYKEGGIDACKGDSGGPLVCKHS GRWQLVGITSWG GCARKEQPGVYTKVAEYIDWILEKIQSSKERALETSPA
Purity	Greater than 90% as determined by SDS-PAGE.
Storage	The shelf life of liquid form is 6 months at -20 centigrade/-80 centigrade. The shelf life of lyophilized form is 12 months at -20 centigrade/-80 centigrade.

 Tel: 1-631-559-9269 1-516-512-3133

 Email: info@creative-biomart.com  Fax: 1-631-938-8127

 45-1 Ramsey Road, Shirley, NY 11967, USA

GENE INFORMATION**Gene Name** Klkb1 kallikrein B1 [Rattus norvegicus (Norway rat)]**Official Symbol** [KLKB1](#)**Synonyms** PK; Klk3; Kalp1; KALP15; fletcher factor; kallikrein B, plasma 1; kininogenin; plasma prekallikrein**Gene ID** [25048](#)**mRNA Refseq** [NM_012725.2](#)**Protein Refseq** [NP_036857.2](#)**UniProt ID** [Q5FVS2](#) Tel: 1-631-559-9269 1-516-512-3133 Email: info@creative-biomart.com  Fax: 1-631-938-8127 45-1 Ramsey Road, Shirley, NY 11967, USA