

Recombinant Cynomolgus KLKB1 protein, His-tagged

Cat. No. KLKB1-1499C Lot. No. (See product label)

SPECIFICATION

| | |
|-------------------------|---|
| Product Overview | Recombinant Cynomolgus KLKB1 protein(A0A2K5VTJ9)(Gly20-Ala638), fused with C-terminal His tag, was expressed in HEK293. |
| Species | Cynomolgus |
| Source | C-His |
| ProteinLength | Gly20-Ala638 |
| Tag | C-His |
| Form | Lyophilized from 0.22µm filtered solution in PBS (pH 7.4). Normally 8% trehalose is added as protectant before lyophilization. |
| Bio-activity | Measured by its ability to cleave a flourogenic peptide substrate Pro-Phe-Arg-7-amid o-4-methylcoumarin (PFR-AMC). The specific activity is > 800 pmol/min/µg |
| Molecular Mass | The protein has a predicted MW of 70.19 kDa. Due to glycosylation, the protein migrates to 75-85 kDa based on Tris-Bis PAGE result. |
| Endotoxin | Less than 1EU per µg by the LAL method. |
| Purity | > 95% as determined by Tris-Bis PAGE; > 95% as determined by HPLC. |
| Storage | Reconstituted protein stable at -80°C for 12 months, 4°C for 1 week. Use a manual |

 Tel: 1-631-559-9269 1-516-512-3133

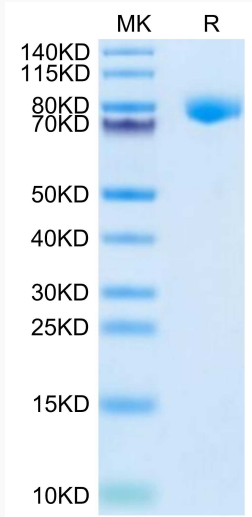
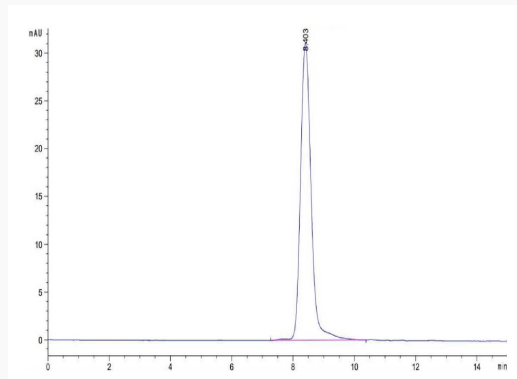
 Email: info@creative-biomart.com  Fax: 1-631-938-8127

 45-1 Ramsey Road, Shirley, NY 11967, USA

defrost freezer and avoid repeated freeze-thaw cycles.

Reconstitution

Centrifuge tubes before opening. Reconstituting to a concentration more than 100 µg/ml is recommended. Dissolve the lyophilized protein in distilled water.

Tris-Bis PAGE**SEC-HPLC**

 Tel: 1-631-559-9269 1-516-512-3133

 Email: info@creative-biomart.com  Fax: 1-631-938-8127

 45-1 Ramsey Road, Shirley, NY 11967, USA