

## Recombinant Human KLKB1 Protein (20-390 aa), His-tagged

Cat. No. KLKB1-2202H Lot. No. (See product label)

### SPECIFICATION

<b>Product Overview</b>	Recombinant Human KLKB1 Protein (20-390 aa) is produced by Yeast expression system. This protein is fused with a 6xHis tag at the N-terminal. Research Area: Cell Biology. Protein Description: Partial.
<b>Species</b>	Human
<b>Source</b>	Yeast
<b>ProteinLength</b>	20-390 aa
<b>Description</b>	The enzyme cleaves Lys-Arg and Arg-Ser bonds. It activates, in a reciprocal reaction, factor XII after its binding to a negatively charged surface. It also releases bradykinin from HMW kininogen and may also play a role in the renin-angiotensin system by converting prorenin into renin.
<b>Form</b>	Tris-based buffer,50% glycerol
<b>Molecular Mass</b>	43.4 kDa
<b>AA Sequence</b>	GCLTQLYENAFFRGGDVASMYTPNAQYCQMRCTFHPRCLLFSFLPASSINDMEKRF GCFLKDSVTGTLPKVHRTGAVSGHSLKQCGHQISACHRDIYKGVDMRGVNFNVSKV SSVEECQKRCTNNIRCQFFSYATQTFHKAERYRNNCLLKYSPPGTPTAIKVLNSNVEG FSLKPCALSEIGCHMNIFQHAFSDVDVARVLTPDAFVCRTICTYHPNCLFFTFYTNV WKIESQRNVCLLKTSESGTPSSSTPQENTISGYSLLTCKRTLPEPCHSKIYPGVDFG GEELNVTFVKGVNVCQETCTKMIRCQFFTYSLLPEDCKEEKCKCFLRLSMDGSPTRI

 Tel: 1-631-559-9269 1-516-512-3133

 Email: [info@creative-biomart.com](mailto:info@creative-biomart.com)  Fax: 1-631-938-8127

 45-1 Ramsey Road, Shirley, NY 11967, USA

AYGTQGSSGYSLRLCNTGDNSVCTTKTSTR

**Purity** > 90% as determined by SDS-PAGE.

**Notes** Repeated freezing and thawing is not recommended. Store working aliquots at 4 centigrade for up to one week.

**Storage** The shelf life is related to many factors, storage state, buffer ingredients, storage temperature and the stability of the protein itself. Generally, the shelf life of liquid form is 6 months at -20 centigrade/-80 centigrade. The shelf life of lyophilized form is 12 months at -20 centigrade/-80 centigrade.

**Concentration** A hardcopy of COA will be sent along with the products. Please refer to it for detailed information.

## GENE INFORMATION

**Gene Name** [KLKB1 kallikrein B, plasma \(Fletcher factor\) 1 \[ Homo sapiens \]](#)

**Official Symbol** [KLKB1](#)

**Synonyms** KLKB1; KLK3; plasma kallikrein; kininogenin; Fletcher factor; plasma prekallikrein; PPK;

**Gene ID** [3818](#)

**mRNA Refseq** [NM\\_000892](#)

**Protein Refseq** [NP\\_000883](#)

**MIM** [229000](#)

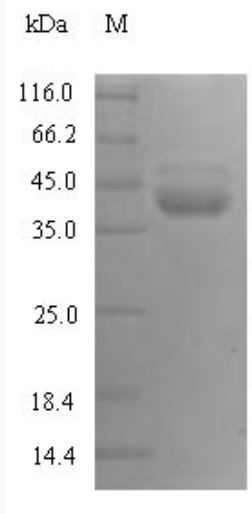
 Tel: 1-631-559-9269 1-516-512-3133

 Email: [info@creative-biomart.com](mailto:info@creative-biomart.com)  Fax: 1-631-938-8127

 45-1 Ramsey Road, Shirley, NY 11967, USA

UniProt ID

P03952



(Tris-Glycine gel) Discontinuous SDS-PAGE (reduced) with 5% enrichment gel and 15% separation gel.

Tel: 1-631-559-9269 1-516-512-3133

Email: [info@creative-biomart.com](mailto:info@creative-biomart.com) Fax: 1-631-938-8127

45-1 Ramsey Road, Shirley, NY 11967, USA