

Recombinant Human KLKB1 Protein (Gly20-Ala638), C-His tagged

Cat. No. KLKB1-4352H **Lot. No.** (See product label)

SPECIFICATION

Product Overview	Recombinant human KLKB1 (Gly20-Ala638) fused with the C-terminal His tag was expressed in Mammalian cells.
Species	Human
Source	Mammalian Cells
ProteinLength	Gly20-Ala638
Form	Lyophilized powder/frozen liquid
Molecular Mass	68.09 kDa
Endotoxin	< 1.0 EU/μg of the protein as determined by the LAL method.
Purity	>90% as determined by SDS-PAGE.
Notes	For research use only.
Storage	Use a manual defrost freezer and avoid repeated freeze thaw cycles. Store at 2 to 8 centigrade for one week. Store at -20 to -80 centigrade for twelve months from the date of receipt.
Storage Buffer	Supplied as solution form in PBS or lyophilized from PBS.

 Tel: 1-631-559-9269 1-516-512-3133

 Email: info@creative-biomart.com  Fax: 1-631-938-8127

 45-1 Ramsey Road, Shirley, NY 11967, USA

Reconstitution Reconstitute in sterile water for a stock solution.

Shipping They are shipped out with dry ice/blue ice unless customers require otherwise.

GENE INFORMATION

Gene Name [KLKB1 kallikrein B, plasma \(Fletcher factor\) 1 \[Homo sapiens \(human\) \]](#)

Official Symbol [KLKB1](#)

Synonyms KLKB1; kallikrein B, plasma (Fletcher factor) 1; KLK3; plasma kallikrein; kininogenin; Fletcher factor; plasma prekallikrein; plasma kallikrein heavy chain; plasma kallikrein light chain; PPK;

Gene ID [3818](#)

mRNA Refseq [NM_000892](#)

Protein Refseq [NP_000883](#)

MIM [229000](#)

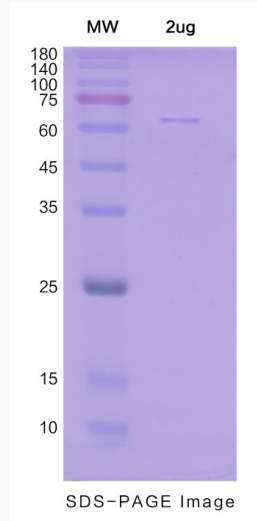
UniProt ID [P03952](#)

 Tel: 1-631-559-9269 1-516-512-3133

 Email: info@creative-biomart.com  Fax: 1-631-938-8127

 45-1 Ramsey Road, Shirley, NY 11967, USA

SDS-PAGE



 Tel: 1-631-559-9269 1-516-512-3133

 Email: info@creative-biomart.com  Fax: 1-631-938-8127

 45-1 Ramsey Road, Shirley, NY 11967, USA