

Recombinant Human KLKB1 Protein (Ala65-Phe348), N-His tagged

Cat. No. KLKB1-4354H Lot. No. (See product label)

SPECIFICATION

Product Overview	Recombinant human KLKB1 (Ala65-Phe348) fused with the N-His tag was expressed in E. coli.
Species	Human
Source	E.coli
ProteinLength	Ala65-Phe348
Form	Lyophilized powder/frozen liquid
Molecular Mass	34.11 kDa
Purity	>90% as determined by SDS-PAGE.
Notes	For research use only.
Storage	Use a manual defrost freezer and avoid repeated freeze thaw cycles. Store at 2 to 8 centigrade for one week. Store at -20 to -80 centigrade for twelve months from the date of receipt.
Storage Buffer	0.01M PBS, pH 7.4, 0.02% NLS
Reconstitution	Reconstitute in sterile water for a stock solution.

 Tel: 1-631-559-9269 1-516-512-3133

 Email: info@creative-biomart.com  Fax: 1-631-938-8127

 45-1 Ramsey Road, Shirley, NY 11967, USA

Shipping They are shipped out with dry ice/blue ice unless customers require otherwise.

GENE INFORMATION

Gene Name KLKB1 kallikrein B, plasma (Fletcher factor) 1 [Homo sapiens (human)]

Official Symbol KLKB1

Synonyms KLKB1; kallikrein B, plasma (Fletcher factor) 1; KLK3; plasma kallikrein; kininogenin; Fletcher factor; plasma prekallikrein; plasma kallikrein heavy chain; plasma kallikrein light chain; PPK;

Gene ID 3818

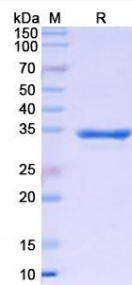
mRNA Refseq NM_000892

Protein Refseq NP_000883

MIM 229000

UniProt ID P03952

SDS-PAGE



 Tel: 1-631-559-9269 1-516-512-3133

 Email: info@creative-biomart.com  Fax: 1-631-938-8127

 45-1 Ramsey Road, Shirley, NY 11967, USA