

Recombinant Human KLKB1 protein, His-tagged

Cat. No. KLKB1-485H **Lot. No.** (See product label)

SPECIFICATION

Product Overview	Recombinant Human KLKB1 protein(P03952)(Gly20-Ala638), fused with C-terminal His tag, was expressed in HEK293.
Species	Human
Source	HEK293
ProteinLength	Gly20-Ala638
Tag	C-His
Form	Supplied as 0.22µm filtered solution in PBS (pH 7.4).
Bio-activity	Measured by its ability to cleave a flourogenic peptide substrate Pro-Phe-Arg-7-amid o-4-methylcoumarin (PFR-AMC). The specific activity is > 1000 pmol/min/ug.
Molecular Mass	The protein has a predicted MW of 70.3 kDa. Due to glycosylation, the protein migrates to 72-80 kDa based on Tris-Bis PAGE result.
Endotoxin	Less than 1EU per µg by the LAL method.
Purity	> 95% as determined by Tris-Bis PAGE;> 95% as determined by HPLC
Storage	Valid for 12 months from date of receipt when stored at -80°C. Recommend to aliquot the protein into smaller quantities for optimal storage. Please do not repeated freeze-

 Tel: 1-631-559-9269 1-516-512-3133

 Email: info@creative-biomart.com  Fax: 1-631-938-8127

 45-1 Ramsey Road, Shirley, NY 11967, USA

thaw cycles.

Reconstitution

It is recommended that sterile water be added to the vial to prepare a stock solution of 0.2 ug/ul. Centrifuge the vial at 4°C before opening to recover the entire contents.

GENE INFORMATION

Gene Name [KLKB1 kallikrein B, plasma \(Fletcher factor\) 1 \[Homo sapiens \]](#)

Official Symbol [KLKB1](#)

Synonyms KLKB1; kallikrein B, plasma (Fletcher factor) 1; KLK3; plasma kallikrein; kininogenin; Fletcher factor; plasma prekallikrein; plasma kallikrein heavy chain; plasma kallikrein light chain; PPK;

Gene ID [3818](#)

mRNA Refseq [NM_000892](#)

Protein Refseq [NP_000883](#)

MIM [229000](#)

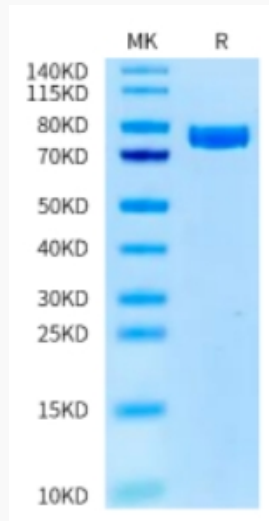
UniProt ID [P03952](#)

 Tel: 1-631-559-9269 1-516-512-3133

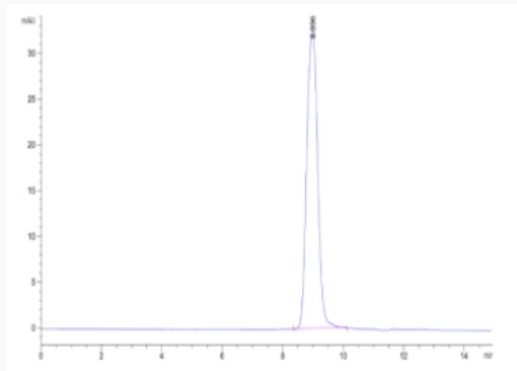
 Email: info@creative-biomart.com  Fax: 1-631-938-8127

 45-1 Ramsey Road, Shirley, NY 11967, USA

Tris-Bis PAGE



SEC-HPLC



 Tel: 1-631-559-9269 1-516-512-3133

 Email: info@creative-biomart.com  Fax: 1-631-938-8127

 45-1 Ramsey Road, Shirley, NY 11967, USA