

Recombinant Human KLKB1 Protein, Myc/DDK-tagged, C13 and N15-labeled

Cat. No. KLKB1-5999H **Lot. No.** (See product label)

SPECIFICATION

Product Overview	KLKB1 MS Standard C13 and N15-labeled recombinant protein (NP_000883) with a C-terminal MYC/DDK tag, was expressed in HEK293 cells.
Species	Human
Source	HEK293
Description	This gene encodes a glycoprotein that participates in the surface-dependent activation of blood coagulation, fibrinolysis, kinin generation and inflammation. The encoded preproprotein present in plasma as a non-covalent complex with high molecular weight kininogen undergoes proteolytic processing mediated by activated coagulation factor XII to generate a disulfide-linked, heterodimeric serine protease comprised of heavy and light chains. Certain mutations in this gene cause prekallikrein deficiency. Alternative splicing results in multiple transcript variants encoding different isoforms.
Molecular Mass	71.37 kDa
AA Sequence	MILFKQATYFISLFATVSCGCLTQLYENAFFRGGDVASMYTPNAQYCQMRCTFHPR CLLFSFLPASSINDMEKRFGCFLKDSVTGTLPKVHRTGAVSGHSLKQCQGHQISACHR DIYKGVDMRGVNFNVSKVSSVEECQKRCTNNIRCQFFSYATQTFHKAEYRNNCLLK YSPGGTPTAIKVLNSVESGFSLKPCALSEIGCHMNIFQHAFSDVDVARVLTPDAFVC RTICTYHPNCLFFTFYTNVWKIESQRNVCLLKTSESGTPSSSTPQENTISGYSLLTCK

 Tel: 1-631-559-9269 1-516-512-3133

 Email: info@creative-biomart.com  Fax: 1-631-938-8127

 45-1 Ramsey Road, Shirley, NY 11967, USA

RTLPEPCHSKIYPGVDFGGEEELNVTFVKGVNVCQETCTKMIRCQFFTYSLLPEDCKE
 EKCKCFLRLSMDGSPTRIAYGTTQGSSGYSLRLCNTGDNSVCTTKTSTRIVGGTNS
 WGEWPWQVSLQVKLTAQRHLCGGSLIGHQWVLTAAHCFDGLPLQDVWRIYSGILN
 LSDITKDTPFSSQIKEIIHQNYKVSEGNHDIALIKLQAPLNYTEFQKPICLPSKGDSTIY
 TNCWVTGWGFSKEKGEIQNILQKVNIPVLTNEECQKRYQDYKITQRMVCAGYKEGG
 KDACKGDSGGPLVCKHNGMWRLVGITSWGEGCARREQPGVYTKVAEYMDWILEK
 TQSSDGKAMQSPATRTRPLEQKLISEEDLAANDILDYKDDDDKV

Purity > 80% as determined by SDS-PAGE and Coomassie blue staining

Stability Stable for 3 months from receipt of products under proper storage and handling conditions.

Storage Store at -80 centigrade. Avoid repeated freeze-thaw cycles.

Concentration 50 µg/mL as determined by BCA

Storage Buffer 100 mM glycine, 25 mM Tris-HCl, pH 7.3.

GENE INFORMATION

Gene Name [KLKB1 kallikrein B1 \[Homo sapiens \(human\) \]](#)

Official Symbol [KLKB1](#)

Synonyms KLKB1; kallikrein B, plasma (Fletcher factor) 1; KLK3; plasma kallikrein; kininogenin; Fletcher factor; plasma prekallikrein; plasma kallikrein heavy chain; plasma kallikrein light chain; PPK;

Gene ID [3818](#)

 Tel: 1-631-559-9269 1-516-512-3133

 Email: info@creative-biomart.com  Fax: 1-631-938-8127

 45-1 Ramsey Road, Shirley, NY 11967, USA

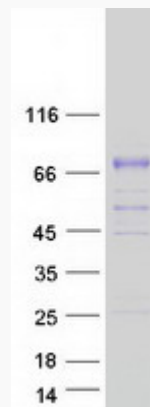
mRNA Refseq [NM_000892](#)

Protein Refseq [NP_000883](#)

MIM [229000](#)

UniProt ID [P03952](#)

SDS-PAGE



 Tel: 1-631-559-9269 1-516-512-3133

 Email: info@creative-biomart.com  Fax: 1-631-938-8127

 45-1 Ramsey Road, Shirley, NY 11967, USA