

Recombinant Rat KLKB1 Protein (391-638 aa), His-tagged

Cat. No. KLKB1-605R **Lot. No.** (See product label)

SPECIFICATION

Product Overview	Recombinant Rat KLKB1 Protein (391-638 aa) is produced by E. coli expression system. This protein is fused with a 6xHis tag at the N-terminal. Protein Description: Partial.
Species	Rat
Source	E.coli
ProteinLength	391-638 aa
Description	The enzyme cleaves Lys-Arg and Arg-Ser bonds. It activates, in a reciprocal reaction, factor XII after its binding to a negatively charged surface. It also releases bradykinin from HMW kininogen and may also play a role in the renin-angiotensin syst by converting prorenin into renin.
Form	Tris-based buffer, 50% glycerol
Molecular Mass	31.8 kDa
AA Sequence	IVGGTNSSLGEWPWQVSLQVKLVSQNHMCGGSIIGRQWILTAAHCFDGIYPDVWR IYGGILNLSEITNKTPFSSIKELIIHQYKMKSEGSYDIALIKLQTPLNYTEFQKPICLPSKA DTNTIYTNCWVTGWGYTKERGETQNILQKATIPLVPNEECQKKYRDYVITKQMICAG YKEGGIDACKGDSGGPLVCKHSGRWQLVGITSWGEGCARKEQPGVYTKVAEYIDW ILEKIQSSKERALETSPA

 Tel: 1-631-559-9269 1-516-512-3133

 Email: info@creative-biomart.com  Fax: 1-631-938-8127

 45-1 Ramsey Road, Shirley, NY 11967, USA

Purity	> 90% as determined by SDS-PAGE.
Notes	Repeated freezing and thawing is not recommended. Store working aliquots at 4 centigrade for up to one week.
Storage	The shelf life is related to many factors, storage state, buffer ingredients, storage temperature and the stability of the protein itself. Generally, the shelf life of liquid form is 6 months at -20 centigrade/-80 centigrade. The shelf life of lyophilized form is 12 months at -20 centigrade/-80 centigrade.
Concentration	A hardcopy of COA with concentration instruction is sent along with the products.

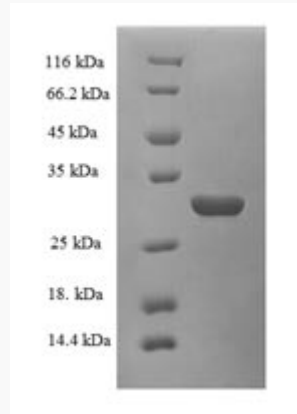
GENE INFORMATION

Gene Name	KLkb1 kallikrein B, plasma 1 [<i>Rattus norvegicus</i>]
Official Symbol	KLKB1
Synonyms	KLKB1; Kik3; Kalp1; KALP15; MGC108748;
Gene ID	25048
mRNA Refseq	NM_012725
Protein Refseq	NP_036857
UniProt ID	P14272

 Tel: 1-631-559-9269 1-516-512-3133

 Email: info@creative-biomart.com  Fax: 1-631-938-8127

 45-1 Ramsey Road, Shirley, NY 11967, USA



(Tris-Glycine gel) Discontinuous SDS-PAGE (reduced) with 5% enrichment gel and 15% separation gel.

 Tel: 1-631-559-9269 1-516-512-3133

 Email: info@creative-biomart.com  Fax: 1-631-938-8127

 45-1 Ramsey Road, Shirley, NY 11967, USA