

## Recombinant Mouse KLRA3 Protein (70-266 aa), His-tagged

Cat. No. KLRA3-2466M Lot. No. (See product label)

### SPECIFICATION

<b>Product Overview</b>	Recombinant Mouse KLRA3 Protein (70-266 aa) is produced by E. coli expression system. This protein is fused with a 6xHis tag at the N-terminal. Protein Description: Partial.
<b>Species</b>	Mouse
<b>Source</b>	E.coli
<b>ProteinLength</b>	70-266 aa
<b>Description</b>	Receptor on natural killer (NK) cells for class I MHC.
<b>Form</b>	Tris-based buffer,50% glycerol
<b>Molecular Mass</b>	27.6 kDa
<b>AA Sequence</b>	QYNQHKQEINETLNHHHNCNMQRAFNLKEEMLTNKSIDCRPSNETLEYIKREQDR WDSKTKTVLDSSRDTGRGVKYWFCYSTKCYFIMNKTTWSGCKANCQHYSVPILKI EDEDELKFLQRHVIPENYWIGLSYDKKKKEWAWIDNGPSKLDMKIRKMNFKSRGCV FLSKARIEDIDCNIPYYCICGKKLDKFPD
<b>Purity</b>	> 85% as determined by SDS-PAGE.
<b>Notes</b>	Repeated freezing and thawing is not recommended. Store working aliquots at 4 centigrade for up to one week.

 Tel: 1-631-559-9269 1-516-512-3133

 Email: [info@creative-biomart.com](mailto:info@creative-biomart.com)  Fax: 1-631-938-8127

 45-1 Ramsey Road, Shirley, NY 11967, USA

**Storage**

The shelf life is related to many factors, storage state, buffer ingredients, storage temperature and the stability of the protein itself. Generally, the shelf life of liquid form is 6 months at -20 centigrade/-80 centigrade. The shelf life of lyophilized form is 12 months at -20 centigrade/-80 centigrade.

**Concentration**

A hardcopy of COA will be sent along with the products. Please refer to it for detailed information.

**GENE INFORMATION****Gene Name**

[Klra3 killer cell lectin-like receptor, subfamily A, member 3 \[ Mus musculus \]](#)

**Official Symbol**

[KLRA3](#)

**Synonyms**

KLRA3; lymphocyte antigen 49c; 5E6; Nk2; Nk-2; Ly49c; Nk2.1; NK-2.1; MGC123910;

**Gene ID**

[16634](#)

**mRNA Refseq**

[NM\\_010648](#)

**Protein Refseq**

[NP\\_034778](#)

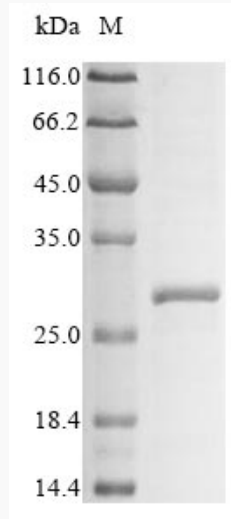
**UniProt ID**

[Q64329](#)

 Tel: 1-631-559-9269 1-516-512-3133

 Email: [info@creative-biomart.com](mailto:info@creative-biomart.com)  Fax: 1-631-938-8127

 45-1 Ramsey Road, Shirley, NY 11967, USA



(Tris-Glycine gel) Discontinuous SDS-PAGE (reduced) with 5% enrichment gel and 15% separation gel.

 Tel: 1-631-559-9269 1-516-512-3133

 Email: [info@creative-biomart.com](mailto:info@creative-biomart.com)  Fax: 1-631-938-8127

 45-1 Ramsey Road, Shirley, NY 11967, USA