

Recombinant Human KLRB1 Protein, C-His-tagged

Cat. No. KLRB1-087H **Lot. No.** (See product label)

SPECIFICATION

Product Overview	Recombinant Human KLRB1 Protein with C-His tag was expressed in E. coli.
Species	Human
Source	E.coli
Description	<p>CD161/KLRB1 (Killer cell lectin-like receptor subfamily B member 1, also known as CLEC5B and NKR-P1A) is a type II transmembrane protein that is expressed on the majority of Natural Killer (NK) cells, NK T cells, and some T lymphocytes.</p> <p>CD161/KLRB1 is also expressed on Th17 cells, promotes their generation, and modulates their function. Engagement with its ligand lectin-like transcript 1 (LLT1) inhibits NK cell function, while LLT1 and CD161/KLRB1 interaction in the presence of a TCR signal enhances IFN-gamma production by T cells. There are several different CD161 isoforms in rodents and some function as activating receptors as well.</p>
Molecular Mass	~18 kDa
AA Sequence	<p>QKSSIEKCSVDIQQSRNKTTTERPGLLNCPYIYWQQLREKCLLFSHTVNPWNNSLADCS</p> <p>TKESSLLLIRDKDELIHTQNLIRDKAILFWIGLNFSLSSEKNWKWINGSFLNSNDLEIRGD</p> <p>AKENSCISISQTSVYSEYCSTEIRWICQKELTPVRNKVYPDS</p>
Purity	Transferred into competent cells and the supernatant was purified by NI column affinity chromatography and the purity is > 85% (by SDS-PAGE).
Notes	For research use only, not for use in diagnostic procedure.

 Tel: 1-631-559-9269 1-516-512-3133

 Email: info@creative-biomart.com  Fax: 1-631-938-8127

 45-1 Ramsey Road, Shirley, NY 11967, USA

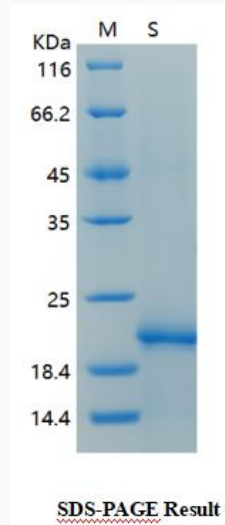
Storage	Store at 4 centigrade short term. Aliquot and store at -20 centigrade long term. Avoid freeze-thaw cycles.
Concentration	≥0.5 mg/mL
Storage Buffer	PBS, 4M Urea, pH7.4
GENE INFORMATION	
Gene Name	KLRB1 killer cell lectin-like receptor subfamily B, member 1 [Homo sapiens (human)]
Official Symbol	KLRB1
Synonyms	KLRB1; killer cell lectin-like receptor subfamily B, member 1; NKR; killer cell lectin-like receptor subfamily B member 1; CD161; CLEC5B; hNKR P1A; NKR P1; NKR P1A; C-type lectin domain family 5 member B; natural killer cell surface protein P1A; NKR-P1; NKRP1A; NKR-P1A; hNKR-P1A; MGC138614;
Gene ID	3820
mRNA Refseq	NM_002258
Protein Refseq	NP_002249
MIM	602890
UniProt ID	Q12918

 Tel: 1-631-559-9269 1-516-512-3133

 Email: info@creative-biomart.com  Fax: 1-631-938-8127

 45-1 Ramsey Road, Shirley, NY 11967, USA

SDS-PAGE



 Tel: 1-631-559-9269 1-516-512-3133

 Email: info@creative-biomart.com  Fax: 1-631-938-8127

 45-1 Ramsey Road, Shirley, NY 11967, USA