

Recombinant Cynomolgus KLRB1 protein, His-Avi-tagged, Biotinylated

Cat. No. KLRB1-160CB **Lot. No.** (See product label)

SPECIFICATION

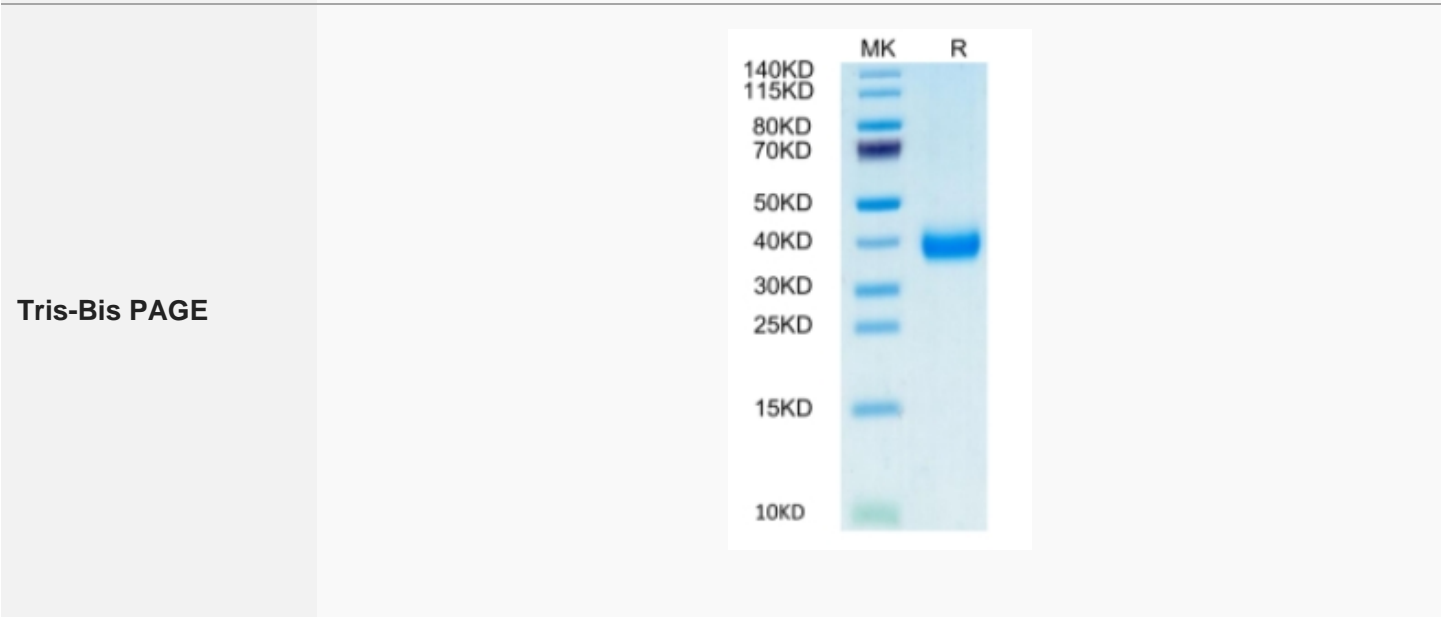
Product Overview	Biotinylated Recombinant Cynomolgus KLRB1 protein(XP_005570142.1)(Gln67-Leu227), fused with C-terminal His and Avi tag, was expressed in HEK293.
Species	Cynomolgus
Source	HEK293
ProteinLength	Gln67-Leu227
Tag	C-His-Avi
Conjugation/Label	Biotin
Form	Lyophilized from 0.22µm filtered solution in PBS (pH 7.4). Normally 5% trehalose is added as protectant before lyophilization.
Bio-activity	Immobilized Biotinylated Cynomolgus CD161, His Tag at 0.5ug/ml (100ul/Well) on the streptavidin precoated plate (5ug/ml). Dose response curve for Anti-CD161 Antibody, hFc Tag with the EC50 of 21.2ng/ml determined by ELISA.
Molecular Mass	The protein has a predicted MW of 21.5 kDa. Due to glycosylation, the protein migrates to 37-42 kDa based on Tris-Bis PAGE result.
Endotoxin	Less than 1EU per µg by the LAL method.

 Tel: 1-631-559-9269 1-516-512-3133

 Email: info@creative-biomart.com  Fax: 1-631-938-8127

 45-1 Ramsey Road, Shirley, NY 11967, USA

Purity	> 95% as determined by Tris-Bis PAGE;> 95% as determined by HPLC
Storage	Reconstituted protein stable at -80°C for 12 months, 4°C for 1 week. Use a manual defrost freezer and avoid repeated freeze-thaw cycles.
Reconstitution	Centrifuge tubes before opening. Reconstituting to a concentration more than 100 µg/ml is recommended. Dissolve the lyophilized protein in distilled water.
Conjugation	Biotin



Tel: 1-631-559-9269 1-516-512-3133

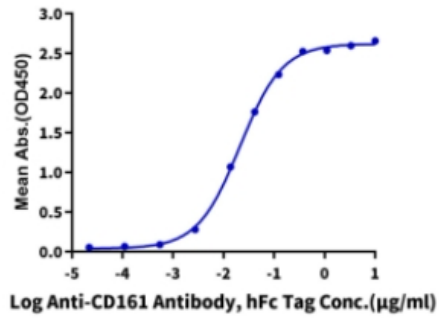
Email: info@creative-biomart.com Fax: 1-631-938-8127

45-1 Ramsey Road, Shirley, NY 11967, USA

ELISA Data

Biotinylated Cynomolgus CD161, His Tag ELISA

0.05µg Biotinylated Cynomolgus CD161, His Tag Per Well



 Tel: 1-631-559-9269 1-516-512-3133

 Email: info@creative-biomart.com  Fax: 1-631-938-8127

 45-1 Ramsey Road, Shirley, NY 11967, USA