

Recombinant Human KLRB1 Protein, hlgG-His-tagged

Cat. No. KLRB1-228H **Lot. No.** (See product label)

SPECIFICATION

Product Overview	Recombinant Human KLRB1(67-225aa) fused with hlgG-His tag at C-terminal was expressed in Insect cells.
Species	Human
Source	Insect Cells
ProteinLength	67-225aa
Description	KLRB1, also known as killer cell lectin-like receptor subfamily B member 1, is classified as a type II membrane protein because it has an external C terminus. It is expressed by NK cells and may be involved in the regulation of NK cell function. It plays a novel and important role in B cell maturation within the GC in humans. It is expressed by lymphocytes found in human gut and liver, as well as blood, especially natural killer (NK) cells, T helper 17 (Th17) cells, and a population of unconventional T cells known as mucosal-associated invariant T (MAIT) cells. It is also expressed, at intermediate levels, on a prominent subset of polyclonal CD8+ T cells, including antiviral populations that display a memory phenotype.
Form	Liquid. In Phosphate Buffered Saline (pH 7.4) containing 10% glycerol.
Molecular Mass	45.7kDa (401aa) 40-57kDa (SDS-PAGE under reducing conditions)
AA Sequence	ADPQKSSIEK CSVDIQQSRN KTTERPGLLN CPIYWQQLRE KCLLFSHTVN PWNNSLADCS TKESSLLIR DKDELIHTQN LIRDKAILFW

 Tel: 1-631-559-9269 1-516-512-3133

 Email: info@creative-biomart.com  Fax: 1-631-938-8127

 45-1 Ramsey Road, Shirley, NY 11967, USA

IGLNFSLSEK NWKWINGSFL NSNDLEIRGD AKENSCISIS QTSVYSEYCS
 TEIRWICQKE LTPVRNKVYP DSLEPKSCDK THTCPPCPAP
 ELLGGPSVFL FPPKPKDTLM ISRTPEVTCV VVDVSHEDPE VKFNWYVDGV
 EVHNAKTKPR EEQYNSTYRV VSVLTVLHQD WLNGKEYKCK
 VSNKALPAPI EKTISKAKGQ PREPQVYTLPSRDELTKNQ VSLTCLVKGF
 YPSDIAVEWE SNGQPENNYK TTPPVLDSDG SFFLYSKLTV
 DKSRWQQGNV FSCSVMHEAL HNHYTQKSLS LSPGKHHHHH H

Purity > 90% by SDS - PAGE

Applications SDS-PAGE

Storage Can be stored at +4 centigrade short term (1-2 weeks). For long term storage, aliquot and store at -20 centigrade or -70 centigrade. Avoid repeated freezing and thawing cycles.

Concentration 0.25 mg/ml (determined by Absorbance at 280nm)

GENE INFORMATION

Gene Name [KLRB1 killer cell lectin-like receptor subfamily B, member 1 \[Homo sapiens \]](#)

Official Symbol [KLRB1](#)

Synonyms KLRB1; killer cell lectin-like receptor subfamily B, member 1; NKR; killer cell lectin-like receptor subfamily B member 1; CD161; CLEC5B; hNKR P1A; NKR P1; NKR P1A; C-type lectin domain family 5 member B; natural killer cell surface protein P1A; NKR-P1; NKRP1A; NKR-P1A; hNKR-P1A; MGC138614;

Gene ID [3820](#)

 Tel: 1-631-559-9269 1-516-512-3133

 Email: info@creative-biomart.com  Fax: 1-631-938-8127

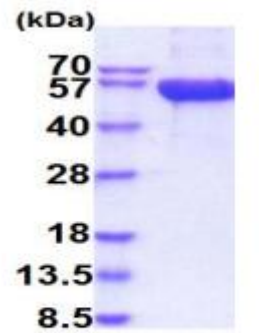
 45-1 Ramsey Road, Shirley, NY 11967, USA

mRNA Refseq [NM_002258](#)

Protein Refseq [NP_002249](#)

MIM [602890](#)

UniProt ID [Q12918](#)



15% SDS-PAGE (3ug)

 Tel: 1-631-559-9269 1-516-512-3133

 Email: info@creative-biomart.com  Fax: 1-631-938-8127

 45-1 Ramsey Road, Shirley, NY 11967, USA