

Recombinant Human KLRB1 protein, His-Avi-tagged, Biotinylated

Cat. No. KLRB1-33HB **Lot. No.** (See product label)

SPECIFICATION

Product Overview	Biotinylated Recombinant Human KLRB1 protein(Q12918-1)(Gln67-Ser225), fused with C-terminal His and Avi tag, was expressed in HEK293.
Species	Human
Source	HEK293
ProteinLength	Gln67-Ser225
Tag	C-His-Avi
Conjugation/Label	Biotin
Form	Lyophilized from 0.22µm filtered solution in PBS (pH 7.4). Normally 5% trehalose is added as protectant before lyophilization.
Bio-activity	Immobilized Anti-CD161 Antibody, hFc Tag at 5µg/ml (100µl/well) on the plate. Dose response curve for Biotinylated Human CD161, His Tag with the EC50 of 32.5ng/ml determined by ELISA.
Molecular Mass	The protein has a predicted MW of 21.4 kDa. Due to glycosylation, the protein migrates to 41-45 kDa based on Tris-Bis PAGE result.
Endotoxin	Less than 1EU per µg by the LAL method.

 Tel: 1-631-559-9269 1-516-512-3133

 Email: info@creative-biomart.com  Fax: 1-631-938-8127

 45-1 Ramsey Road, Shirley, NY 11967, USA

Purity	> 95% as determined by Tris-Bis PAGE;> 95% as determined by HPLC
Storage	Reconstituted protein stable at -80°C for 12 months, 4°C for 1 week. Use a manual defrost freezer and avoid repeated freeze-thaw cycles.
Reconstitution	Centrifuge tubes before opening. Reconstituting to a concentration more than 100 µg/ml is recommended. Dissolve the lyophilized protein in distilled water.
Conjugation	Biotin

GENE INFORMATION

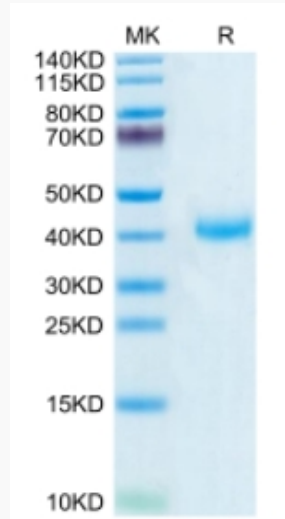
Gene Name	KLRB1 killer cell lectin-like receptor subfamily B, member 1 [Homo sapiens]
Official Symbol	KLRB1
Synonyms	KLRB1; killer cell lectin-like receptor subfamily B, member 1; NKR; killer cell lectin-like receptor subfamily B member 1; CD161; CLEC5B; hNKR P1A; NKR P1; NKR P1A; C-type lectin domain family 5 member B; natural killer cell surface protein P1A; NKR-P1; NKRP1A; NKR-P1A; hNKR-P1A; MGC138614;
Gene ID	3820
mRNA Refseq	NM_002258
Protein Refseq	NP_002249
MIM	602890
UniProt ID	Q12918

 Tel: 1-631-559-9269 1-516-512-3133

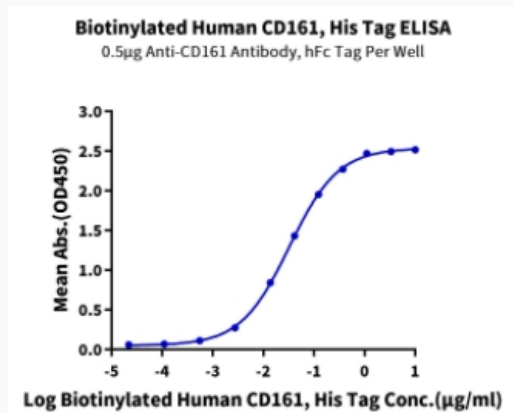
 Email: info@creative-biomart.com  Fax: 1-631-938-8127

 45-1 Ramsey Road, Shirley, NY 11967, USA

Tris-Bis PAGE



ELISA Data



 Tel: 1-631-559-9269 1-516-512-3133

 Email: info@creative-biomart.com  Fax: 1-631-938-8127

 45-1 Ramsey Road, Shirley, NY 11967, USA