

Recombinant Human KLRB1 Protein (Gln67-Ser225), C-Fc tagged

Cat. No. KLRB1-4357H Lot. No. (See product label)

SPECIFICATION

Product Overview	Recombinant human KLRB1 (Gln67-Ser225) fused with the C-terminal Fc tag was expressed in mammalian cells.
Species	Human
Source	Mammalian Cells
ProteinLength	Gln67-Ser225
Form	Lyophilized powder/frozen liquid
Molecular Mass	42.49 kDa
Endotoxin	< 1.0 EU/μg of the protein as determined by the LAL method.
Purity	>90% as determined by SDS-PAGE.
Notes	For research use only.
Storage	Use a manual defrost freezer and avoid repeated freeze thaw cycles. Store at 2 to 8 centigrade for one week. Store at -20 to -80 centigrade for twelve months from the date of receipt.
Storage Buffer	Supplied as solution form in PBS or lyophilized from PBS.

 Tel: 1-631-559-9269 1-516-512-3133

 Email: info@creative-biomart.com  Fax: 1-631-938-8127

 45-1 Ramsey Road, Shirley, NY 11967, USA

Reconstitution Reconstitute in sterile water for a stock solution.

Shipping They are shipped out with dry ice/blue ice unless customers require otherwise.

GENE INFORMATION

Gene Name [KLRB1 killer cell lectin-like receptor subfamily B, member 1 \[Homo sapiens \(human\) \]](#)

Official Symbol [KLRB1](#)

Synonyms

KLRB1; killer cell lectin-like receptor subfamily B, member 1; NKR; killer cell lectin-like receptor subfamily B member 1; CD161; CLEC5B; hNKR P1A; NKR P1; NKR P1A; C-type lectin domain family 5 member B; natural killer cell surface protein P1A; NKR-P1; NKRP1A; NKR-P1A; hNKR-P1A; MGC138614;

Gene ID [3820](#)

mRNA Refseq [NM_002258](#)

Protein Refseq [NP_002249](#)

MIM [602890](#)

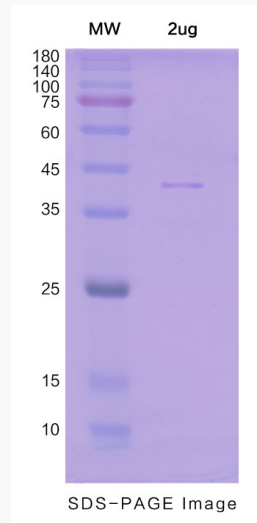
UniProt ID [Q12918](#)

 Tel: 1-631-559-9269 1-516-512-3133

 Email: info@creative-biomart.com  Fax: 1-631-938-8127

 45-1 Ramsey Road, Shirley, NY 11967, USA

SDS-PAGE



 Tel: 1-631-559-9269 1-516-512-3133

 Email: info@creative-biomart.com  Fax: 1-631-938-8127

 45-1 Ramsey Road, Shirley, NY 11967, USA