

## Recombinant Human KLRB1 Protein, GST-tagged

Cat. No. KLRB1-4918H Lot. No. (See product label)

### SPECIFICATION

<b>Product Overview</b>	Human KLRB1 partial ORF ( NP_002249, 126 a.a. - 225 a.a.) recombinant protein with GST-tag at N-terminal.
<b>Species</b>	Human
<b>Source</b>	Wheat Germ
<b>Description</b>	Natural killer (NK) cells are lymphocytes that mediate cytotoxicity and secrete cytokines after immune stimulation. Several genes of the C-type lectin superfamily, including the rodent NKRP1 family of glycoproteins, are expressed by NK cells and may be involved in the regulation of NK cell function. The KLRB1 protein contains an extracellular domain with several motifs characteristic of C-type lectins, a transmembrane domain, and a cytoplasmic domain. The KLRB1 protein is classified as a type II membrane protein because it has an external C terminus. [provided by RefSeq]
<b>Molecular Mass</b>	36.74 kDa
<b>AA Sequence</b>	ESSLLLIRDKDELIHTQNLIRDKAILFWIGLNFSLSEKNWKWINGSFLNSNDLEIRGDA KENSISISQTSVYSEYCSTEIRWICQKELTPVRNKVYPDS
<b>Applications</b>	Enzyme-linked Immunoabsorbent Assay Western Blot (Recombinant protein) Antibody Production Protein Array

 Tel: 1-631-559-9269 1-516-512-3133

 Email: [info@creative-biomart.com](mailto:info@creative-biomart.com)  Fax: 1-631-938-8127

 45-1 Ramsey Road, Shirley, NY 11967, USA

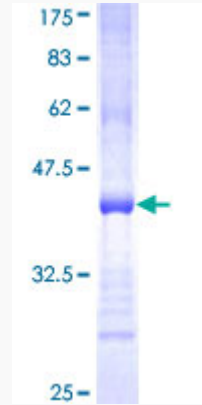
<b>Notes</b>	Best use within three months from the date of receipt of this protein.
<b>Storage</b>	Store at -80 centigrade. Aliquot to avoid repeated freezing and thawing.
<b>Storage Buffer</b>	50 mM Tris-HCl, 10 mM reduced Glutathione, pH=8.0 in the elution buffer.
<b>GENE INFORMATION</b>	
<b>Gene Name</b>	<a href="#">KLRB1 killer cell lectin-like receptor subfamily B, member 1 [ Homo sapiens ]</a>
<b>Official Symbol</b>	<a href="#">KLRB1</a>
<b>Synonyms</b>	KLRB1; killer cell lectin-like receptor subfamily B, member 1; NKR; killer cell lectin-like receptor subfamily B member 1; CD161; CLEC5B; hNKR P1A; NKR P1; NKR P1A; C-type lectin domain family 5 member B; natural killer cell surface protein P1A; NKR-P1; NKRP1A; NKR-P1A; hNKR-P1A; MGC138614;
<b>Gene ID</b>	<a href="#">3820</a>
<b>mRNA Refseq</b>	<a href="#">NM_002258</a>
<b>Protein Refseq</b>	<a href="#">NP_002249</a>
<b>MIM</b>	<a href="#">602890</a>
<b>UniProt ID</b>	<a href="#">Q12918</a>

 Tel: 1-631-559-9269 1-516-512-3133

 Email: [info@creative-biomart.com](mailto:info@creative-biomart.com)  Fax: 1-631-938-8127

 45-1 Ramsey Road, Shirley, NY 11967, USA

**Quality Control  
Testing**



12.5% SDS-PAGE Stained with Coomassie Blue

 Tel: 1-631-559-9269 1-516-512-3133

 Email: [info@creative-biomart.com](mailto:info@creative-biomart.com)  Fax: 1-631-938-8127

 45-1 Ramsey Road, Shirley, NY 11967, USA