

## Recombinant Human KLRC1 Protein, C-His-tagged

Cat. No. KLRC1-088H Lot. No. (See product label)

### SPECIFICATION

<b>Product Overview</b>	Recombinant Human KLRC1 Protein with C-His tag was expressed in E. coli.
<b>Species</b>	Human
<b>Source</b>	E.coli
<b>Description</b>	<p>The activity of natural killer (NK) cells is regulated by members of multiple receptor families that recognize class I MHC molecules, such as the killer cell inhibitory receptor/leukocyte immunoglobulin-like receptor (KIR/LIR) family and the C-type lectin superfamily. The KIR/LIR family includes p91A (also designated pp130 or PIR-B, for paired immunoglobulin-like receptor-B) and p91B (also designated PIR-A). p91A acts as an inhibitory receptor through interactions with SHP-1, whereas p91B acts as an activating receptor. CD94, NKG2 and Ly-49 are members of the C-type lectin superfamily of type II membrane glycoproteins. CD94 forms heterodimers with NKG2 isoforms on the surface of NK cells, whereas Ly-49 isoforms form homodimers. NKG2-D, expressed on NK cells, gdT cells and CD8+αβ T cells, is a receptor for the stress inducible protein MICA, an antigen frequently expressed in epithelial tumors.</p>
<b>Molecular Mass</b>	~15 kDa
<b>AA Sequence</b>	<p>PSTLIQRHNNSSLNTRTQKARHCGHCPEEWITYSNSCYIGKERRTWEESLLACTSK  NSSLLSIDNEEEMKFLSIISPSSWIGVFRNSSHHPWVTMNGLAFKHEIKDSDNAELNC  AVLQVNRLKSAQCGSSIIYHCKHKL</p>
<b>Purity</b>	Transferred into competent cells and the supernatant was purified by NI column

 Tel: 1-631-559-9269 1-516-512-3133

 Email: [info@creative-biomart.com](mailto:info@creative-biomart.com)  Fax: 1-631-938-8127

 45-1 Ramsey Road, Shirley, NY 11967, USA

affinity chromatography and the purity is > 85% (by SDS-PAGE).

**Notes**

For research use only, not for use in diagnostic procedure.

**Storage**

Store at 4 centigrade short term. Aliquot and store at -20 centigrade long term. Avoid freeze-thaw cycles.

**Concentration**

≥0.5 mg/mL

**Storage Buffer**

PBS, 4M Urea, pH7.4

## GENE INFORMATION

**Gene Name**

KLRC1 killer cell lectin-like receptor subfamily C, member 1 [ Homo sapiens (human) ]

**Official Symbol**

KLRC1

**Synonyms**

KLRC1; killer cell lectin-like receptor subfamily C, member 1; NKG2; NKG2-A/NKG2-B type II integral membrane protein; CD159a; NKG2 1/B activating NK receptor; NKG2 A; NKG2 B; NK cell receptor A; C-lectin type II protein; natural killer cell lectin; natural killer group protein 2; NKG2-1/B activating NK receptor; NKG2-A/B-activating NK receptor; CD159 antigen-like family member A; NKG2-A/B type II integral membrane protein; NKG2A; CD159A; MGC13374; MGC59791;

**Gene ID**

3821

**mRNA Refseq**

NM\_002259

**Protein Refseq**

NP\_002250

 Tel: 1-631-559-9269 1-516-512-3133

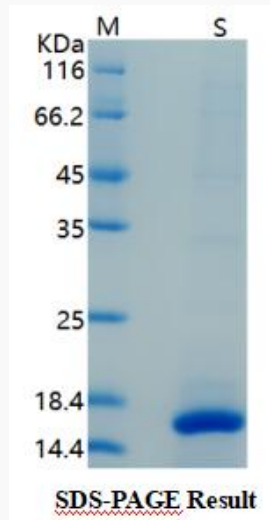
 Email: [info@creative-biomart.com](mailto:info@creative-biomart.com)  Fax: 1-631-938-8127

 45-1 Ramsey Road, Shirley, NY 11967, USA

MIM 161555

UniProt ID P26715

SDS-PAGE



 Tel: 1-631-559-9269 1-516-512-3133

 Email: [info@creative-biomart.com](mailto:info@creative-biomart.com)  Fax: 1-631-938-8127

 45-1 Ramsey Road, Shirley, NY 11967, USA