

Recombinant Human KLRC1 and CD94 Protein, Arg100-Leu233 and Ser34-Ile179, N-His-Avi tagged, Biotinylated

Cat. No. KLRC1-192H Lot. No. (See product label)

SPECIFICATION

Product Overview

Recombinant human NKG2A and CD94-N-His-Avi protein was developed from HEK293 and has a target region of N-His-Avi.

Species

Human

Source

HEK293

ProteinLength

Arg100-Leu233 (NKG2A) and Ser34-Ile179 (CD94)

Description

Natural killer (NK) cells are lymphocytes that can mediate lysis of certain tumor cells and virus-infected cells without previous activation. They can also regulate specific humoral and cell-mediated immunity. The protein encoded by this gene belongs to the killer cell lectin-like receptor family, also called NKG2 family, which is a group of transmembrane proteins preferentially expressed in NK cells. This family of proteins is characterized by the type II membrane orientation and the presence of a C-type lectin domain. This protein forms a complex with another family member, KLRD1/CD94, and has been implicated in the recognition of the MHC class I HLA-E molecules in NK cells. The genes of NKG2 family members form a killer cell lectin-like receptor gene cluster on chromosome 12. Multiple alternatively spliced transcript variants encoding distinct isoforms have been observed.

Conjugation/Label

Biotin

Form

Lyophilised

 Tel: 1-631-559-9269 1-516-512-3133

 Email: info@creative-biomart.com  Fax: 1-631-938-8127

 45-1 Ramsey Road, Shirley, NY 11967, USA

Endotoxin	Endotoxin level was found to be less than 0.1 ng/μg (1 EU/μg).
Notes	FOR RESEARCH USE ONLY (RUO).
Storage	The lyophilized protein is stable for at least 1 year from date of receipt at -20 centigrade.
Storage Buffer	Lyophilised from 0.2 μm filtered PBS solution pH 7.4. Upon receipt centrifuge vial to ensure maximal product extraction, recommended: 20 sec, 5K RPM
Conjugation	Biotin

GENE INFORMATION

Gene Name	KLRC1 killer cell lectin-like receptor subfamily C, member 1 [Homo sapiens (human)]
Official Symbol	KLRC1
Synonyms	KLRC1; killer cell lectin-like receptor subfamily C, member 1; NKG2; NKG2-A/NKG2-B type II integral membrane protein; CD159a; NKG2 1/B activating NK receptor; NKG2 A; NKG2 B; NK cell receptor A; C-lectin type II protein; natural killer cell lectin; natural killer group protein 2; NKG2-1/B activating NK receptor; NKG2-A/B-activating NK receptor; CD159 antigen-like family member A; NKG2-A/B type II integral membrane protein; NKG2A; CD159A; MGC13374; MGC59791;
Gene ID	3821
mRNA Refseq	NM_002259
Protein Refseq	NP_002250

 Tel: 1-631-559-9269 1-516-512-3133

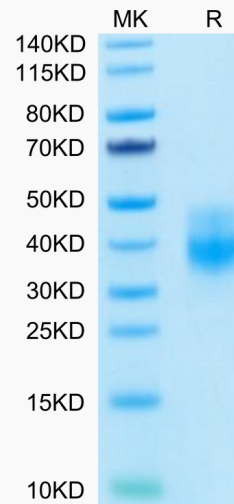
 Email: info@creative-biomart.com  Fax: 1-631-938-8127

 45-1 Ramsey Road, Shirley, NY 11967, USA

MIM 161555

UniProt ID P26715

Biotinylated Human NKG2A and CD94 on Tris-Bis PAGE under reduced condition. The purity is greater than 95%.



The purity of Biotinylated Human NKG2A and CD94 is greater than 95% as determined by SEC-HPLC.

Immobilized Anti-NKG2A Antibody, hFc Tag at 1 µg/mL (100 µL/Well) on the plate. Dose response curve for Biotinylated Human

 Tel: 1-631-559-9269 1-516-512-3133

 Email: info@creative-biomart.com  Fax: 1-631-938-8127

 45-1 Ramsey Road, Shirley, NY 11967, USA



**NKG2A and CD94,
His Tag with the
EC50 of 0.11 µg/mL
determined by
ELISA.**

 Tel: 1-631-559-9269 1-516-512-3133

 Email: info@creative-biomart.com  Fax: 1-631-938-8127

 45-1 Ramsey Road, Shirley, NY 11967, USA