

## Recombinant Human KLRC1 protein, hFc-tagged

Cat. No. KLRC1-3365H Lot. No. (See product label)

### SPECIFICATION

<b>Product Overview</b>	Recombinant Human KLRC1 protein(P26715-1)(Arg100-Ala219), fused with N-terminal hFc tag, was expressed in HEK293.
<b>Species</b>	Human
<b>Source</b>	HEK293
<b>ProteinLength</b>	Arg100-Ala219
<b>Tag</b>	N-hFc
<b>Form</b>	Lyophilized from 0.22µm filtered solution in PBS (pH 7.4). Normally 5% trehalose is added as protectant before lyophilization.
<b>Bio-activity</b>	Immobilized Human NKG2A, hFc Tag at 2µg/ml (100µl/Well) on Fc Antibody (2µg/ml) precoated plate. Dose response curve for Biotinylated Anti-NKG2A Antibody, hFc Tag with the EC50 of 37.1ng/ml determined by ELISA.
<b>Molecular Mass</b>	The protein has a predicted MW of 41.1 kDa. Due to glycosylation, the protein migrates to 55-70 kDa based on Tris-Bis PAGE result.
<b>Endotoxin</b>	Less than 1EU per µg by the LAL method.
<b>Purity</b>	> 95% as determined by Tris-Bis PAGE; > 95% as determined by HPLC

 Tel: 1-631-559-9269 1-516-512-3133

 Email: [info@creative-biomart.com](mailto:info@creative-biomart.com)  Fax: 1-631-938-8127

 45-1 Ramsey Road, Shirley, NY 11967, USA

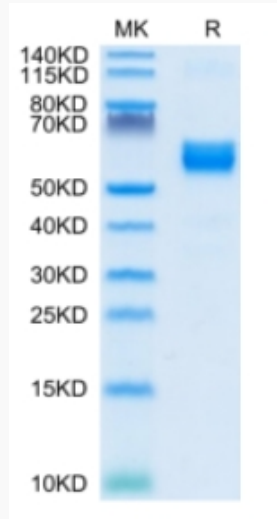
<b>Storage</b>	Reconstituted protein stable at -80°C for 12 months, 4°C for 1 week. Use a manual defrost freezer and avoid repeated freeze-thaw cycles.
<b>Reconstitution</b>	Centrifuge tubes before opening. Reconstituting to a concentration more than 100 µg/ml is recommended. Dissolve the lyophilized protein in distilled water.
<b>GENE INFORMATION</b>	
<b>Gene Name</b>	KLRC1 killer cell lectin-like receptor subfamily C, member 1 [ Homo sapiens ]
<b>Official Symbol</b>	KLRC1
<b>Synonyms</b>	KLRC1; killer cell lectin-like receptor subfamily C, member 1; NKG2; NKG2-A/NKG2-B type II integral membrane protein; CD159a; NKG2 1/B activating NK receptor; NKG2 A; NKG2 B; NK cell receptor A; C-lectin type II protein; natural killer cell lectin; natural killer group protein 2; NKG2-1/B activating NK receptor; NKG2-A/B-activating NK receptor; CD159 antigen-like family member A; NKG2-A/B type II integral membrane protein; NKG2A; CD159A; MGC13374; MGC59791;
<b>Gene ID</b>	3821
<b>mRNA Refseq</b>	NM_002259
<b>Protein Refseq</b>	NP_002250
<b>MIM</b>	161555
<b>UniProt ID</b>	P26715

 Tel: 1-631-559-9269 1-516-512-3133

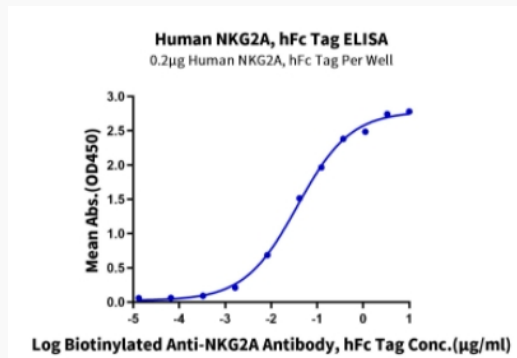
 Email: [info@creative-biomart.com](mailto:info@creative-biomart.com)  Fax: 1-631-938-8127

 45-1 Ramsey Road, Shirley, NY 11967, USA

**Tris-Bis PAGE**



**ELISA Data**



 Tel: 1-631-559-9269 1-516-512-3133

 Email: [info@creative-biomart.com](mailto:info@creative-biomart.com)  Fax: 1-631-938-8127

 45-1 Ramsey Road, Shirley, NY 11967, USA