

## Recombinant Human KLRC1 protein, His-Avi-tagged, Biotinylated

Cat. No. KLRC1-416HB Lot. No. (See product label)

### SPECIFICATION

<b>Product Overview</b>	Recombinant Biotinylated Human NKG2A is expressed from mammalian with a His tag and Avi tag at the N-terminal. It contains Arg100- Leu233.
<b>Species</b>	Human
<b>Source</b>	HEK293
<b>ProteinLength</b>	It contains Arg100- Leu233.
<b>Description</b>	NKG2, also known as NKG2A(CD159A), is a member of the killer cell lectin-like receptor family. NKG2A marks a unique immune effector subset preferentially co-expressing the tissue-resident CD103 molecule, but not immune checkpoint inhibitors. It is expressed only in NK-cells, but not in T-cells or B-cells.
<b>Form</b>	Supplied as 0.22um filtered solution in PBS (pH 7.4).
<b>Molecular Mass</b>	The protein has a predicted MW of 18.3 kDa. Due to glycosylation, the protein migrates to 37-48KD based on Bis-Tris PAGE result
<b>Endotoxin</b>	Less than 0.05EU per ug by the LAL method.
<b>Purity</b>	> 95% as determined by Bis-Tris PAGE
<b>Storage</b>	The product should be stored at -70°C. Please do not repeated freeze-thaw cycles.

 Tel: 1-631-559-9269 1-516-512-3133

 Email: [info@creative-biomart.com](mailto:info@creative-biomart.com)  Fax: 1-631-938-8127

 45-1 Ramsey Road, Shirley, NY 11967, USA

**Reconstitution** It is recommended that sterile water be added to the vial to prepare a stock solution of 0.2 ug/ul. Centrifuge the vial at 4°C before opening to recover the entire contents.

**Conjugation** Biotin

## GENE INFORMATION

**Gene Name** [KLRC1 killer cell lectin-like receptor subfamily C, member 1 \[ Homo sapiens \]](#)

**Official Symbol** [KLRC1](#)

**Synonyms** CD159a antigen; CD159a; CD159 antigen-like family member A; C-lectin type II protein; killer cell lectin-like receptor subfamily C, member 1; Klrc1; MGC13374; natural killer cell lectin; natural killer group protein 2; NK cell receptor A; NKG2; NKG2-1/B activating NK receptor; NKG2A; NKG2-A; NKG2-A/B type II integral membrane protein; NKG2-A/B-activating NK receptor; NKG2-A/NKG2-B type II integral membrane protein; NKG2AMGC59791; NKG2-B

**Gene ID** [3821](#)

**mRNA Refseq** [NM\\_002259](#)

**Protein Refseq** [NP\\_002250](#)

**MIM** [161555](#)

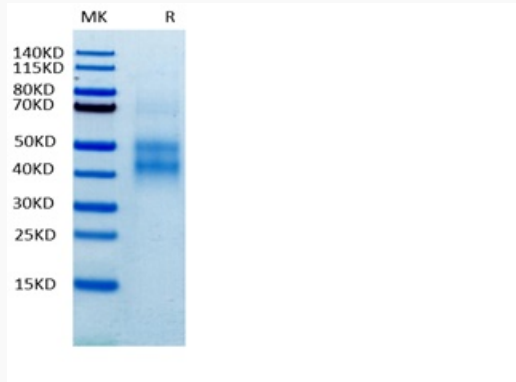
**UniProt ID** [P26715](#)

 Tel: 1-631-559-9269 1-516-512-3133

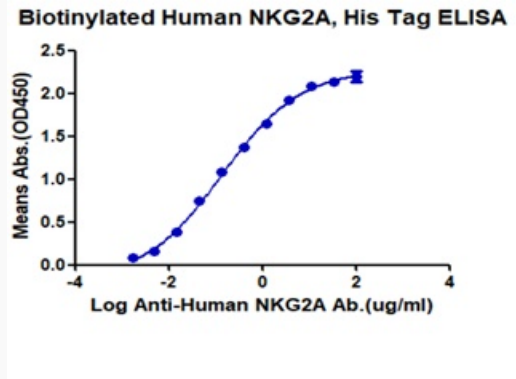
 Email: [info@creative-biomart.com](mailto:info@creative-biomart.com)  Fax: 1-631-938-8127

 45-1 Ramsey Road, Shirley, NY 11967, USA

**Tris-Bis PAGE**



**HPLC data**



 Tel: 1-631-559-9269 1-516-512-3133

 Email: [info@creative-biomart.com](mailto:info@creative-biomart.com)  Fax: 1-631-938-8127

 45-1 Ramsey Road, Shirley, NY 11967, USA