

# Recombinant Human KLRC1 Protein (Arg100-Leu233), N-His tagged

Cat. No. KLRC1-4361H Lot. No. (See product label)

## SPECIFICATION

<b>Product Overview</b>	Recombinant human KLRC1 (Arg100-Leu233) fused with the N-terminal His tag was expressed in Mammalian cells.
<b>Species</b>	Human
<b>Source</b>	Mammalian Cells
<b>ProteinLength</b>	Arg100-Leu233
<b>Form</b>	Lyophilized powder/frozen liquid
<b>Molecular Mass</b>	14.74 kDa
<b>Purity</b>	>90% as determined by SDS-PAGE.
<b>Notes</b>	For research use only.
<b>Storage</b>	Use a manual defrost freezer and avoid repeated freeze thaw cycles. Store at 2 to 8 centigrade for one week. Store at -20 to -80 centigrade for twelve months from the date of receipt.
<b>Storage Buffer</b>	Supplied as solution form in PBS or lyophilized from PBS.
<b>Reconstitution</b>	Reconstitute in sterile water for a stock solution.

 Tel: 1-631-559-9269 1-516-512-3133

 Email: [info@creative-biomart.com](mailto:info@creative-biomart.com)  Fax: 1-631-938-8127

 45-1 Ramsey Road, Shirley, NY 11967, USA

**Shipping** They are shipped out with dry ice/blue ice unless customers require otherwise.

## GENE INFORMATION

**Gene Name** [KLRC1 killer cell lectin-like receptor subfamily C, member 1 \[ Homo sapiens \(human\) \]](#)

**Official Symbol** [KLRC1](#)

**Synonyms** KLRC1; killer cell lectin-like receptor subfamily C, member 1; NKG2; NKG2-A/NKG2-B type II integral membrane protein; CD159a; NKG2 1/B activating NK receptor; NKG2 A; NKG2 B; NK cell receptor A; C-lectin type II protein; natural killer cell lectin; natural killer group protein 2; NKG2-1/B activating NK receptor; NKG2-A/B-activating NK receptor; CD159 antigen-like family member A; NKG2-A/B type II integral membrane protein; NKG2A; CD159A; MGC13374; MGC59791;

**Gene ID** [3821](#)

**mRNA Refseq** [NM\\_002259](#)

**Protein Refseq** [NP\\_002250](#)

**MIM** [161555](#)

**UniProt ID** [P26715](#)

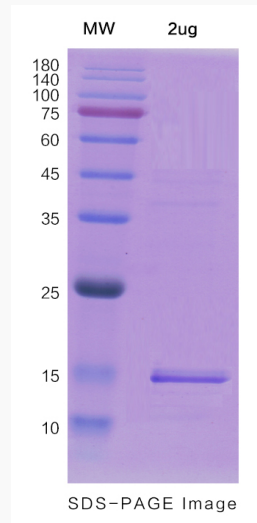
 Tel: 1-631-559-9269 1-516-512-3133

 Email: [info@creative-biomart.com](mailto:info@creative-biomart.com)  Fax: 1-631-938-8127

 45-1 Ramsey Road, Shirley, NY 11967, USA



**SDS-PAGE**



Tel: 1-631-559-9269 1-516-512-3133

Email: [info@creative-biomart.com](mailto:info@creative-biomart.com) Fax: 1-631-938-8127

45-1 Ramsey Road, Shirley, NY 11967, USA