

Recombinant Human KLRC1 protein, His-Avi-tagged

Cat. No. KLRC1-772H Lot. No. (See product label)

SPECIFICATION

Product Overview	Recombinant Human KLRC1 protein(P26715-1)(Arg100-Leu233), fused with N-terminal His and Avi tag, was expressed in HEK293.
Species	Human
Source	HEK293
ProteinLength	Arg100-Leu233
Tag	N-His-Avi
Form	Lyophilized from 0.22µm filtered solution in PBS (pH 7.4). Normally 5% trehalose is added as protectant before lyophilization.
Bio-activity	Immobilized Human NKG2A, His Tag at 2ug/ml (100ul/Well) on the plate. Dose response curve for Anti-NKG2A Antibody, hFc Tag with the EC50 of 5.8ng/ml determined by ELISA.
Molecular Mass	The protein has a predicted MW of 18.3 kDa. Due to glycosylation, the protein migrates to 40-50 kDa based on Tris-Bis PAGE result.
Endotoxin	Less than 1EU per µg by the LAL method.
Purity	> 95% as determined by Tris-Bis PAGE;> 95% as determined by HPLC

 Tel: 1-631-559-9269 1-516-512-3133

 Email: info@creative-biomart.com  Fax: 1-631-938-8127

 45-1 Ramsey Road, Shirley, NY 11967, USA

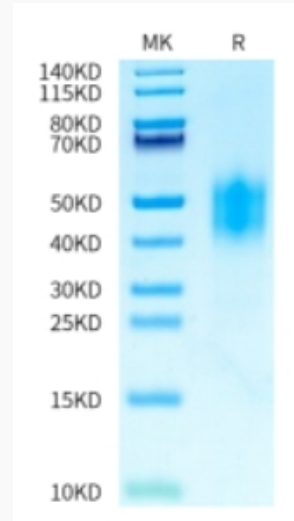
Storage	Reconstituted protein stable at -80°C for 12 months, 4°C for 1 week. Use a manual defrost freezer and avoid repeated freeze-thaw cycles.
Reconstitution	Centrifuge tubes before opening. Reconstituting to a concentration more than 100 µg/ml is recommended. Dissolve the lyophilized protein in distilled water.
GENE INFORMATION	
Gene Name	KLRC1 killer cell lectin-like receptor subfamily C, member 1 [Homo sapiens]
Official Symbol	KLRC1
Synonyms	KLRC1; killer cell lectin-like receptor subfamily C, member 1; NKG2; NKG2-A/NKG2-B type II integral membrane protein; CD159a; NKG2 1/B activating NK receptor; NKG2 A; NKG2 B; NK cell receptor A; C-lectin type II protein; natural killer cell lectin; natural killer group protein 2; NKG2-1/B activating NK receptor; NKG2-A/B-activating NK receptor; CD159 antigen-like family member A; NKG2-A/B type II integral membrane protein; NKG2A; CD159A; MGC13374; MGC59791;
Gene ID	3821
mRNA Refseq	NM_002259
Protein Refseq	NP_002250
MIM	161555
UniProt ID	P26715

 Tel: 1-631-559-9269 1-516-512-3133

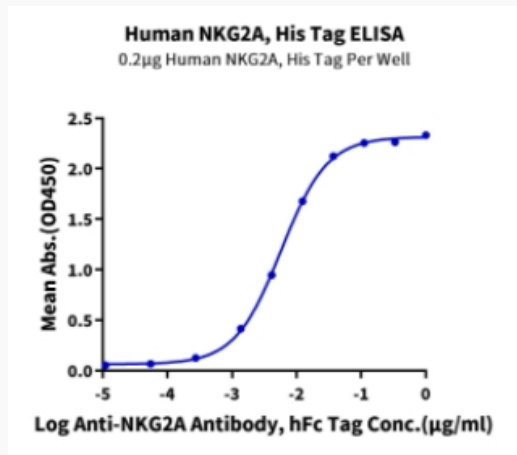
 Email: info@creative-biomart.com  Fax: 1-631-938-8127


 45-1 Ramsey Road, Shirley, NY 11967, USA

Tris-Bis PAGE



ELISA Data



 Tel: 1-631-559-9269 1-516-512-3133

 Email: info@creative-biomart.com  Fax: 1-631-938-8127

 45-1 Ramsey Road, Shirley, NY 11967, USA