

Recombinant Human KLRC2 protein, hFc-tagged

Cat. No. KLRC2-1704H Lot. No. (See product label)

SPECIFICATION

Product Overview	Recombinant Human KLRC2 protein(P26717)(Glu98-Leu231), fused with C-terminal hFc tag, was expressed in HEK293.
Species	Human
Source	C-hFc
ProteinLength	Glu98-Leu231
Tag	C-hFc
Form	Lyophilized from 0.22µm filtered solution in PBS (pH 7.4). Normally 8% trehalose is added as protectant before lyophilization.
Bio-activity	
Molecular Mass	The protein has a predicted MW of 42.07 kDa. Due to glycosylation, the protein migrates to 48-58 kDa based on Tris-Bis PAGE result.
Endotoxin	Less than 1EU per µg by the LAL method.
Purity	> 95% as determined by Tris-Bis PAGE; > 95% as determined by HPLC.
Storage	Reconstituted protein stable at -80°C for 12 months, 4°C for 1 week. Use a manual defrost freezer and avoid repeated freeze-thaw cycles.

 Tel: 1-631-559-9269 1-516-512-3133

 Email: info@creative-biomart.com  Fax: 1-631-938-8127

 45-1 Ramsey Road, Shirley, NY 11967, USA

Reconstitution Centrifuge tubes before opening. Reconstituting to a concentration more than 100 µg/ml is recommended. Dissolve the lyophilized protein in distilled water.

GENE INFORMATION

Gene Name KLRC2 killer cell lectin-like receptor subfamily C, member 2 [Homo sapiens]

Official Symbol KLRC2

Synonyms KLRC2; killer cell lectin-like receptor subfamily C, member 2; NKG2-C type II integral membrane protein; CD159c; NKG2 C; NK cell receptor C; NKG2-C-activating NK receptor; CD159 antigen-like family member C; NKG2C; NKG2-C; MGC138244;

Gene ID 3822

mRNA Refseq NM_002260

Protein Refseq NP_002251

MIM 602891

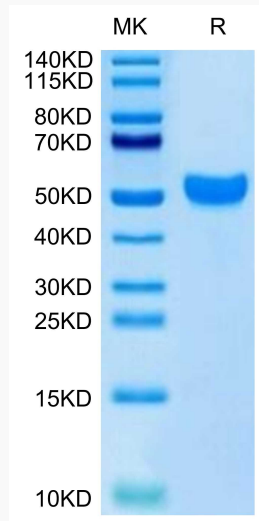
UniProt ID P26717

 Tel: 1-631-559-9269 1-516-512-3133

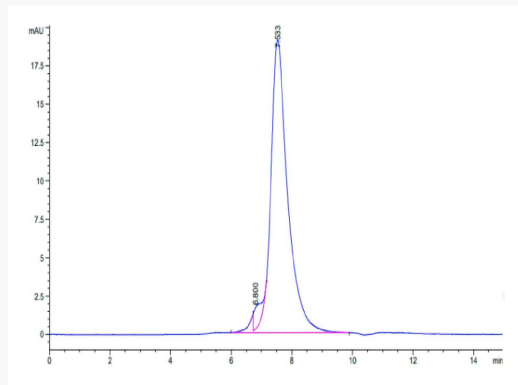
 Email: info@creative-biomart.com  Fax: 1-631-938-8127

 45-1 Ramsey Road, Shirley, NY 11967, USA

Tris-Bis PAGE



SEC-HPLC



 Tel: 1-631-559-9269 1-516-512-3133

 Email: info@creative-biomart.com  Fax: 1-631-938-8127

 45-1 Ramsey Road, Shirley, NY 11967, USA