

# Recombinant Human KLRC2 Protein, Glu98-Leu231, N-His-Avi tagged, Biotinylated

**Cat. No.** KLRC2-195H    **Lot. No.** (See product label)

## SPECIFICATION

<b>Product Overview</b>	Recombinant human NKG2C/CD159c-N-His-Avi protein was developed from HEK293 and has a target region of N-His-Avi.
<b>Species</b>	Human
<b>Source</b>	HEK293
<b>ProteinLength</b>	Glu98-Leu231
<b>Description</b>	Natural killer (NK) cells are lymphocytes that can mediate lysis of certain tumor cells and virus-infected cells without previous activation. They can also regulate specific humoral and cell-mediated immunity. NK cells preferentially express several calcium-dependent (C-type) lectins, which have been implicated in the regulation of NK cell function. The group, designated KLRC (NKG2) are expressed primarily in natural killer (NK) cells and encodes a family of transmembrane proteins characterized by a type II membrane orientation (extracellular C terminus) and the presence of a C-type lectin domain. The KLRC (NKG2) gene family is located within the NK complex, a region that contains several C-type lectin genes preferentially expressed on NK cells. KLRC2 alternative splice variants have been described but their full-length nature has not been determined.
<b>Conjugation/Label</b>	Biotin
<b>Form</b>	Lyophilised

 Tel: 1-631-559-9269    1-516-512-3133

 Email: [info@creative-biomart.com](mailto:info@creative-biomart.com)     Fax: 1-631-938-8127

 45-1 Ramsey Road, Shirley, NY 11967, USA

<b>Endotoxin</b>	Endotoxin level was found to be less than 0.1 ng/μg (1 EU/μg).
<b>Notes</b>	FOR RESEARCH USE ONLY (RUO).
<b>Storage</b>	The lyophilized protein is stable for at least 1 year from date of receipt at -20 centigrade.
<b>Storage Buffer</b>	Lyophilised from 0.2 μm filtered PBS solution pH 7.4. Upon receipt centrifuge vial to ensure maximal product extraction, recommended: 20 sec, 5K RPM
<b>Conjugation</b>	Biotin

## GENE INFORMATION

<b>Gene Name</b>	KLRC2 killer cell lectin-like receptor subfamily C, member 2 [ Homo sapiens (human) ]
<b>Official Symbol</b>	KLRC2
<b>Synonyms</b>	KLRC2; killer cell lectin-like receptor subfamily C, member 2; NKG2-C type II integral membrane protein; CD159c; NKG2 C; NK cell receptor C; NKG2-C-activating NK receptor; CD159 antigen-like family member C; NKG2C; NKG2-C; MGC138244;
<b>Gene ID</b>	3822
<b>mRNA Refseq</b>	NM_002260
<b>Protein Refseq</b>	NP_002251
<b>MIM</b>	602891

 Tel: 1-631-559-9269 1-516-512-3133

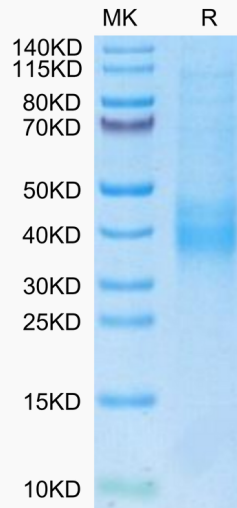
 Email: [info@creative-biomart.com](mailto:info@creative-biomart.com)  Fax: 1-631-938-8127

 45-1 Ramsey Road, Shirley, NY 11967, USA

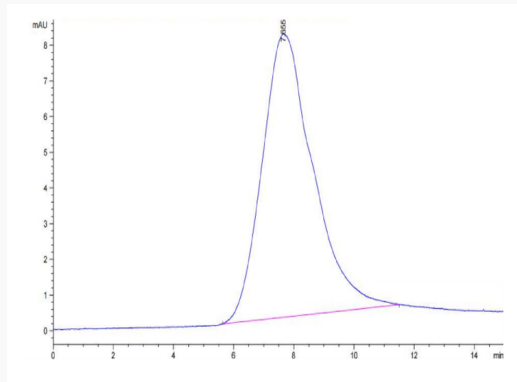
UniProt ID

P26717

**Biotinylated Human NKG2C on Tris-Bis PAGE under reduced condition. The purity is greater than 95%.**



**The purity of Biotinylated Human NKG2C is greater than 95% as determined by SEC-HPLC.**



 Tel: 1-631-559-9269 1-516-512-3133

 Email: [info@creative-biomart.com](mailto:info@creative-biomart.com)  Fax: 1-631-938-8127

 45-1 Ramsey Road, Shirley, NY 11967, USA