

Recombinant Human KLRC2 Protein (94-231 aa), His-SUMO-tagged

Cat. No. KLRC2-606H **Lot. No.** (See product label)

SPECIFICATION

Product Overview	Recombinant Human KLRC2 Protein (94-231 aa) is produced by E. coli expression system. This protein is fused with a 6xHis-SUMO tag at the N-terminal. Research Area: Immunology. Protein Description: Partial.
Species	Human
Source	E.coli
ProteinLength	94-231 aa
Description	Plays a role as a receptor for the recognition of MHC class I HLA-E molecules by NK cells and some cytotoxic T-cells.
Form	Tris-based buffer, 50% glycerol
Molecular Mass	31.8 kDa
AA Sequence	IPFLEQNNSSPNTRTQKARHCGHCPEEWITYSNSCYIYGKERRTWEESELLACTSKNS SLLSIDNEEEMKFLASILPSSWIGVFRNSSHHPWVTINGLAFKHKIKDSDNAELNCAV LQVNRLKSAQCGSSMIYHCKHKL
Purity	> 90% as determined by SDS-PAGE.
Notes	Repeated freezing and thawing is not recommended. Store working aliquots at 4

 Tel: 1-631-559-9269 1-516-512-3133

 Email: info@creative-biomart.com  Fax: 1-631-938-8127

 45-1 Ramsey Road, Shirley, NY 11967, USA

centigrade for up to one week.

Storage

The shelf life is related to many factors, storage state, buffer ingredients, storage temperature and the stability of the protein itself. Generally, the shelf life of liquid form is 6 months at -20 centigrade/-80 centigrade. The shelf life of lyophilized form is 12 months at -20 centigrade/-80 centigrade.

Concentration

A hardcopy of COA with concentration instruction is sent along with the products.

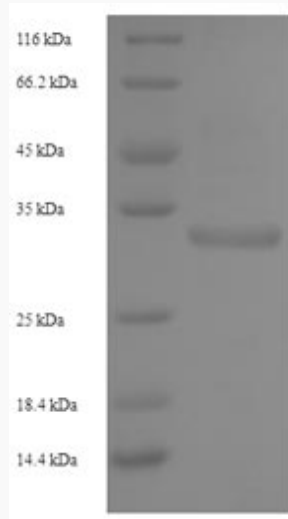
GENE INFORMATION

Gene Name	KLRC2 killer cell lectin-like receptor subfamily C, member 2 [Homo sapiens]
Official Symbol	KLRC2
Synonyms	KLRC2; CD159c; NKG2 C; NK cell receptor C; NKG2C; NKG2-C; MGC138244;
Gene ID	3822
mRNA Refseq	NM_002260
Protein Refseq	NP_002251
MIM	602891
UniProt ID	P26717

 Tel: 1-631-559-9269 1-516-512-3133

 Email: info@creative-biomart.com  Fax: 1-631-938-8127

 45-1 Ramsey Road, Shirley, NY 11967, USA



(Tris-Glycine gel) Discontinuous SDS-PAGE (reduced) with 5% enrichment gel and 15% separation gel.

 Tel: 1-631-559-9269 1-516-512-3133

 Email: info@creative-biomart.com  Fax: 1-631-938-8127

 45-1 Ramsey Road, Shirley, NY 11967, USA