

## Recombinant Human KLRC4 Protein, GST-tagged

Cat. No. KLRC4-4912H Lot. No. (See product label)

### SPECIFICATION

**Product Overview** Human KLRC4 full-length ORF ( AAH17784, 1 a.a. - 158 a.a.) recombinant protein with GST-tag at N-terminal.

**Species** Human

**Source** Wheat Germ

**Description**

Natural killer (NK) cells are lymphocytes that can mediate lysis of certain tumor cells and virus-infected cells without previous activation. They can also regulate specific humoral and cell-mediated immunity. NK cells preferentially express several calcium-dependent (C-type) lectins, which have been implicated in the regulation of NK cell function. KLRC4 is a member of the NKG2 group which are expressed primarily in natural killer (NK) cells and encodes a family of transmembrane proteins characterized by a type II membrane orientation (extracellular C terminus) and the presence of a C-type lectin domain. The NKG2 gene family is located within the NK complex, a region that contains several C-type lectin genes preferentially expressed on NK cells. The 3' end of the KLRC4 transcript includes the first non-coding exon found at the 5' end of the adjacent D12S2489E gene transcript. [provided by RefSeq

**Molecular Mass** 43.12 kDa

**AA Sequence**

MNKQRGTYSEVSLAQDPKRQQRKLGKGNKISISGKQEIFQVELNLQNASSDHQGND  
KTYHCKGLLPPEKLTAEVLGIICIVLMATVLTIVLIPCIGVLEQNNFSLNRRMQKARH  
CGHCPEEWITYSNSCYIYGKERRTWEERVVLPVLRRTLICFL

 Tel: 1-631-559-9269 1-516-512-3133

 Email: [info@creative-biomart.com](mailto:info@creative-biomart.com)  Fax: 1-631-938-8127

 45-1 Ramsey Road, Shirley, NY 11967, USA

<b>Applications</b>	Enzyme-linked Immunoabsorbent Assay Western Blot (Recombinant protein) Antibody Production Protein Array
<b>Notes</b>	Best use within three months from the date of receipt of this protein.
<b>Storage</b>	Store at -80 centigrade. Aliquot to avoid repeated freezing and thawing.
<b>Storage Buffer</b>	50 mM Tris-HCl, 10 mM reduced Glutathione, pH=8.0 in the elution buffer.

## GENE INFORMATION

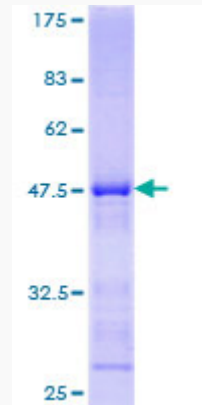
<b>Gene Name</b>	KLRC4 killer cell lectin-like receptor subfamily C, member 4 [ Homo sapiens ]
<b>Official Symbol</b>	KLRC4
<b>Synonyms</b>	KLRC4; killer cell lectin-like receptor subfamily C, member 4; NKG2-F type II integral membrane protein; NKG2 F; NK cell receptor F; natural killer cell group 2-F; NKG2-F-activating NK receptor; NKG2F; NKG2-F; FLJ17759; FLJ78582;
<b>Gene ID</b>	8302
<b>mRNA Refseq</b>	NM_013431
<b>Protein Refseq</b>	NP_038459
<b>MIM</b>	602893
<b>UniProt ID</b>	O43908

 Tel: 1-631-559-9269 1-516-512-3133

 Email: [info@creative-biomart.com](mailto:info@creative-biomart.com)  Fax: 1-631-938-8127

 45-1 Ramsey Road, Shirley, NY 11967, USA

**Quality Control  
Testing**



12.5% SDS-PAGE Stained with Coomassie Blue

 Tel: 1-631-559-9269 1-516-512-3133

 Email: [info@creative-biomart.com](mailto:info@creative-biomart.com)  Fax: 1-631-938-8127

 45-1 Ramsey Road, Shirley, NY 11967, USA