

Recombinant Human KLRD1 Protein, His-tagged

Cat. No. KLRD1-222H Lot. No. (See product label)

SPECIFICATION

Product Overview	Recombinant Human KLRD1(32-179aa) fused with His tag at C-terminal was expressed in Insect cells.
Species	Human
Source	Insect Cells
ProteinLength	32-179aa
Description	KLRD1, also known as natural killer cells antigen CD94 isoform 1, is expressed on the surface of natural killer cells in the innate immune system. It plays a role as a receptor for the recognition of MHC class I HLA-E molecules by NK cells and some cytotoxic T-cells. This protein can form disulfide-bonded heterodimer with NKG2 family members. CD94 and NKG2 complex interacts with Human Leukocyte Antigen (HLA)-E on target cells on the surface of natural killer cells.
Form	Liquid. In Phosphate Buffered Saline (pH 7.4) containing 10% glycerol.
Molecular Mass	18.2kDa (157aa) 18-28kDa (SDS-PAGE under reducing conditions.)
AA Sequence	ADPKNSFTKL SIEPAFTPGP NIELQKSDSC CSCQEKWVGY RCNCYFISSE QKTWNESRHL CASQKSSLLQ LQNTDELDFM SSSQQFYWIG LSYSEEHTAW LWENGALSQ YLFPSFETFN TKNCIAYNPN GNALDESCED KNRYICKQQL IHHHHHH

 Tel: 1-631-559-9269 1-516-512-3133

 Email: info@creative-biomart.com  Fax: 1-631-938-8127

 45-1 Ramsey Road, Shirley, NY 11967, USA

Purity	> 95% by SDS - PAGE
Applications	SDS-PAGE
Storage	Can be stored at +4 centigrade short term (1-2 weeks). For long term storage, aliquot and store at -20 centigrade or -70 centigrade. Avoid repeated freezing and thawing cycles.
Concentration	0.5 mg/ml (determined by Absorbance at 280)

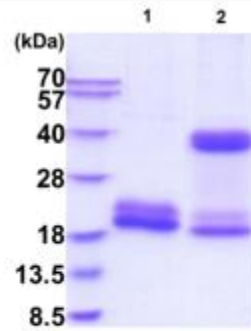
GENE INFORMATION

Gene Name	KLRD1 killer cell lectin-like receptor subfamily D, member 1 [Homo sapiens]
Official Symbol	KLRD1
Synonyms	KLRD1; killer cell lectin-like receptor subfamily D, member 1; CD94; natural killer cells antigen CD94; KP43; CD94 antigen; NK cell receptor;
Gene ID	3824
mRNA Refseq	NM_002262
Protein Refseq	NP_002253
MIM	602894
UniProt ID	Q13241

 Tel: 1-631-559-9269 1-516-512-3133

 Email: info@creative-biomart.com  Fax: 1-631-938-8127

 45-1 Ramsey Road, Shirley, NY 11967, USA



15% SDS-PAGE (3ug)

Lane 1: reducing conditions

Lane 2: non-reducing conditions

 Tel: 1-631-559-9269 1-516-512-3133

 Email: info@creative-biomart.com  Fax: 1-631-938-8127

 45-1 Ramsey Road, Shirley, NY 11967, USA