

Recombinant Human KLRD1 protein, rFc-tagged

Cat. No. KLRD1-3757H Lot. No. (See product label)

SPECIFICATION

Product Overview	Recombinant Human KLRD1 protein(Q13241-1)(Lys32-Ile179), fused with N-terminal rFc tag, was expressed in HEK293.
Species	Human
Source	HEK293
Form	Lyophilized from 0.22 µm filtered solution in PBS, pH 7.4. Normally 5% trehalose and 5% mannitol are added as protectants before lyophilization.
Molecular Mass	44.4 kDa
Endotoxin	<0.1 EU/µg protein, LAL method
Purity	>90 %, SDS-PAGE >90 %, SEC-HPLC
Storage	It is recommended that the protein be aliquoted for optimal storage. Avoid repeated freeze-thaw cycles. Until expiry date, -20°C to -80°C as lyophilized proteins. 3 months, -20°C to -80°C under sterile conditions after reconstitution.
Reconstitution	Briefly centrifuge the tube before opening. Reconstitute at 0.1-0.5 mg/mL in sterile water.

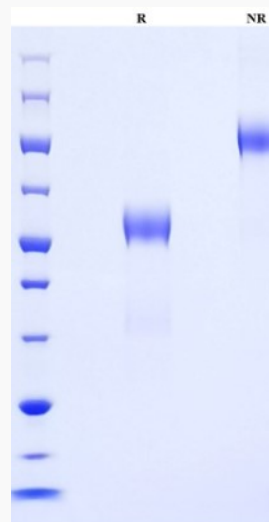
GENE INFORMATION

 Tel: 1-631-559-9269 1-516-512-3133

 Email: info@creative-biomart.com  Fax: 1-631-938-8127

 45-1 Ramsey Road, Shirley, NY 11967, USA

Gene Name	KLRD1 killer cell lectin-like receptor subfamily D, member 1 [Homo sapiens]
Official Symbol	KLRD1
Synonyms	KLRD1; killer cell lectin-like receptor subfamily D, member 1; CD94; natural killer cells antigen CD94; KP43; CD94 antigen; NK cell receptor;
Gene ID	3824
mRNA Refseq	NM_001114396
Protein Refseq	NP_001107868
MIM	602894
UniProt ID	Q13241

SDS-PAGE


 Tel: 1-631-559-9269 1-516-512-3133

 Email: info@creative-biomart.com  Fax: 1-631-938-8127

 45-1 Ramsey Road, Shirley, NY 11967, USA