

Recombinant Human KLRD1 Protein, MYC/DDK-tagged, C13 and N15-labeled

Cat. No. KLRD1-388H **Lot. No.** (See product label)

SPECIFICATION

Product Overview	KLRD1 MS Standard C13 and N15-labeled recombinant protein (NP_002253) with a C-terminal MYC/DDK tag, was expressed in HEK293 cells.
Species	Human
Source	HEK293
Description	Natural killer (NK) cells are a distinct lineage of lymphocytes that mediate cytotoxic activity and secrete cytokines upon immune stimulation. Several genes of the C-type lectin superfamily, including members of the NKG2 family, are expressed by NK cells and may be involved in the regulation of NK cell function. KLRD1 (CD94) is an antigen preferentially expressed on NK cells and is classified as a type II membrane protein because it has an external C terminus. Several transcript variants encoding different isoforms have been found for this gene. [provided by RefSeq, May 2017]
Molecular Mass	20.5 kDa
AA Sequence	MAVFKTTLWRLISGTLGIICLSLMATLGILLKNSFTKLSIEPAFTPGPNIELQKSDCCS CQEKWVG YRCNCYFISSEQKTWNESRHL CASQKSSLLQLQNTDELDFMSSSQQFY WIGLSYSEEHTAWLWENG SALSQYLFP SFETFNTKNCIAYNPNGNALDESCEDKNR YICKQQLITRTRPLEQKLISEEDLAANDILDYKDDDDKV
Purity	> 80% as determined by SDS-PAGE and Coomassie blue staining

 Tel: 1-631-559-9269 1-516-512-3133

 Email: info@creative-biomart.com  Fax: 1-631-938-8127

 45-1 Ramsey Road, Shirley, NY 11967, USA

Stability	Stable for 3 months from receipt of products under proper storage and handling conditions.
Storage	Store at -80 centigrade. Avoid repeated freeze-thaw cycles.
Concentration	50 µg/mL as determined by BCA
Storage Buffer	100 mM glycine, 25 mM Tris-HCl, pH 7.3.

GENE INFORMATION

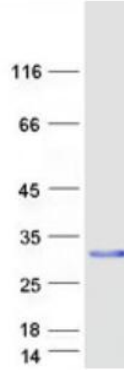
Gene Name	KLRD1 killer cell lectin-like receptor subfamily D, member 1 [Homo sapiens (human)]
Official Symbol	KLRD1
Synonyms	KLRD1; killer cell lectin-like receptor subfamily D, member 1; CD94; natural killer cells antigen CD94; KP43; CD94 antigen; NK cell receptor;
Gene ID	3824
mRNA Refseq	NM_002262
Protein Refseq	NP_002253
MIM	602894
UniProt ID	Q13241

 Tel: 1-631-559-9269 1-516-512-3133

 Email: info@creative-biomart.com  Fax: 1-631-938-8127

 45-1 Ramsey Road, Shirley, NY 11967, USA

SDS-PAGE



 Tel: 1-631-559-9269 1-516-512-3133

 Email: info@creative-biomart.com  Fax: 1-631-938-8127

 45-1 Ramsey Road, Shirley, NY 11967, USA