

# Recombinant Human KLRD1 Protein (Lys32-Ile179), C-His tagged

**Cat. No.** KLRD1-4363H    **Lot. No.** (See product label)

## SPECIFICATION

<b>Product Overview</b>	Recombinant human KLRD1 (Lys32-Ile179) fused with the C-terminal His tag was expressed in Mammalian cells.
<b>Species</b>	Human
<b>Source</b>	Mammalian Cells
<b>ProteinLength</b>	Lys32-Ile179
<b>Form</b>	Lyophilized powder/frozen liquid
<b>Molecular Mass</b>	16.39 kDa
<b>Endotoxin</b>	< 1.0 EU/μg of the protein as determined by the LAL method.
<b>Purity</b>	>90% as determined by SDS-PAGE.
<b>Notes</b>	For research use only.
<b>Storage</b>	Use a manual defrost freezer and avoid repeated freeze thaw cycles. Store at 2 to 8 centigrade for one week. Store at -20 to -80 centigrade for twelve months from the date of receipt.
<b>Storage Buffer</b>	Supplied as solution form in PBS or lyophilized from PBS.

 Tel: 1-631-559-9269    1-516-512-3133

 Email: [info@creative-biomart.com](mailto:info@creative-biomart.com)     Fax: 1-631-938-8127

 45-1 Ramsey Road, Shirley, NY 11967, USA

**Reconstitution** Reconstitute in sterile water for a stock solution.

**Shipping** They are shipped out with dry ice/blue ice unless customers require otherwise.

## GENE INFORMATION

**Gene Name** [KLRD1 killer cell lectin-like receptor subfamily D, member 1 \[ Homo sapiens \(human\) \]](#)

**Official Symbol** [KLRD1](#)

**Synonyms** KLRD1; killer cell lectin-like receptor subfamily D, member 1; CD94; natural killer cells antigen CD94; KP43; CD94 antigen; NK cell receptor;

**Gene ID** [3824](#)

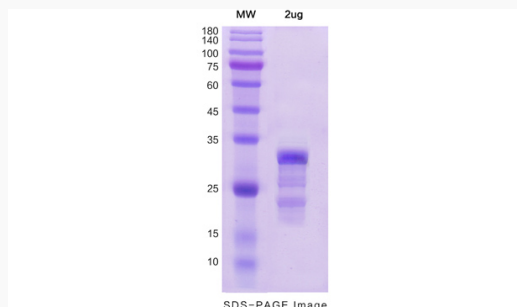
**mRNA Refseq** [NM\\_001114396](#)

**Protein Refseq** [NP\\_001107868](#)

**MIM** [602894](#)

**UniProt ID** [Q13241](#)

### SDS-PAGE



 Tel: 1-631-559-9269 1-516-512-3133

 Email: [info@creative-biomart.com](mailto:info@creative-biomart.com)  Fax: 1-631-938-8127

 45-1 Ramsey Road, Shirley, NY 11967, USA