

Recombinant Human KLRD1 protein, His-Avi-tagged

Cat. No. KLRD1-48H **Lot. No.** (See product label)

SPECIFICATION

Product Overview	Human CD94 Protein is expressed from mammalian with a His and Avi Tag at the N-terminal. It contains Ser34-Ile179.
Species	Human
Source	HEK293
ProteinLength	It contains Ser34-Ile179.
Description	CD94 is an approximately 25 kDa type 2 transmembrane protein that plays an important role in regulating natural killer (NK) cell activation. CD94 plays a role as a receptor for the recognition of MHC class I HLA-E molecules by NK cells and some cytotoxic T-cells.
Form	Supplied as 0.22um filtered solution in PBS (pH 7.4).
Molecular Mass	The protein has a predicted MW of 19.8 kDa. Due to glycosylation, the protein migrates to 38- 42KDa based on Bis-Tris PAGE result.
Endotoxin	Less than 0.2EU per ug by the LAL method.
Purity	> 95% as determined by SDS-PAGE; > 95% as determined by HPLC
Storage	The product should be stored at -70°C. Please do not repeated freeze-thaw cycles.

 Tel: 1-631-559-9269 1-516-512-3133

 Email: info@creative-biomart.com  Fax: 1-631-938-8127

 45-1 Ramsey Road, Shirley, NY 11967, USA

Reconstitution It is recommended that sterile water be added to the vial to prepare a stock solution of 0.2 ug/ul. Centrifuge the vial at 4°C before opening to recover the entire contents.

GENE INFORMATION

Gene Name KLRD1 killer cell lectin-like receptor subfamily D, member 1 [Homo sapiens]

Official Symbol KLRD1

Synonyms CD94 antigen; CD94; CD94natural killer cells antigen CD94; Killer cell lectin-like receptor subfamily D member 1; killer cell lectin-like receptor subfamily D, member 1; KLRD1; KP43; NK cell receptor

Gene ID 3824

mRNA Refseq NM_001114396

Protein Refseq NP_001107868

MIM 602894

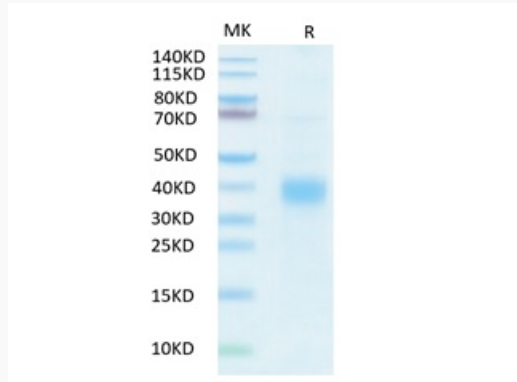
UniProt ID Q13241

 Tel: 1-631-559-9269 1-516-512-3133

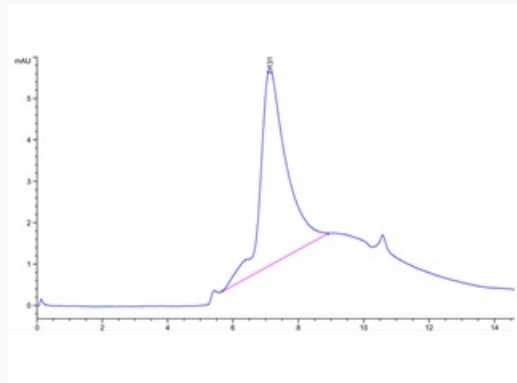
 Email: info@creative-biomart.com  Fax: 1-631-938-8127

 45-1 Ramsey Road, Shirley, NY 11967, USA

Tris-Bis PAGE



HPLC data



 Tel: 1-631-559-9269 1-516-512-3133

 Email: info@creative-biomart.com  Fax: 1-631-938-8127

 45-1 Ramsey Road, Shirley, NY 11967, USA