

Recombinant Human KLRD1 protein, His-Avi-tagged, Biotinylated

Cat. No. KLRD1-5643H Lot. No. (See product label)

SPECIFICATION

Product Overview	Biotinylated Recombinant Human KLRD1 protein(Q13241-1)(Ser34-Ile179), fused with N-terminal His and Avi tag, was expressed in HEK293.
Species	Human
Source	HEK293
ProteinLength	Ser34-Ile179
Tag	N-His-Avi
Conjugation/Label	Biotin
Form	Lyophilized from 0.22µm filtered solution in PBS (pH 7.4). Normally 5% trehalose is added as protectant before lyophilization.
Molecular Mass	The protein has a predicted MW of 19.8 kDa. Due to glycosylation, the protein migrates to 35-45 kDa based on Tris-Bis PAGE result.
Endotoxin	Less than 1EU per µg by the LAL method.
Purity	> 95% as determined by Tris-Bis PAGE; > 95% as determined by HPLC
Storage	Reconstituted protein stable at -80°C for 12 months, 4°C for 1 week. Use a manual

 Tel: 1-631-559-9269 1-516-512-3133

 Email: info@creative-biomart.com  Fax: 1-631-938-8127

 45-1 Ramsey Road, Shirley, NY 11967, USA

defrost freezer and avoid repeated freeze-thaw cycles.

Reconstitution

Centrifuge tubes before opening. Reconstituting to a concentration more than 100 µg/ml is recommended. Dissolve the lyophilized protein in distilled water.

Conjugation

Biotin

GENE INFORMATION

Gene Name

[KLRD1 killer cell lectin-like receptor subfamily D, member 1 \[Homo sapiens \]](#)

Official Symbol

[KLRD1](#)

Synonyms

KLRD1; killer cell lectin-like receptor subfamily D, member 1; CD94; natural killer cells antigen CD94; KP43; CD94 antigen; NK cell receptor;

Gene ID

[3824](#)

mRNA Refseq

[NM_001114396](#)

Protein Refseq

[NP_001107868](#)

MIM

[602894](#)

UniProt ID

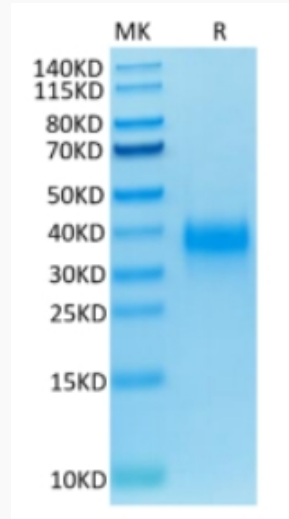
[Q13241](#)

 Tel: 1-631-559-9269 1-516-512-3133

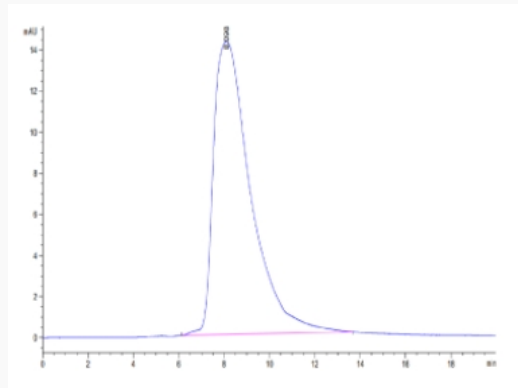
 Email: info@creative-biomart.com  Fax: 1-631-938-8127

 45-1 Ramsey Road, Shirley, NY 11967, USA

Tris-Bis PAGE



SEC-HPLC



 Tel: 1-631-559-9269 1-516-512-3133

 Email: info@creative-biomart.com  Fax: 1-631-938-8127

 45-1 Ramsey Road, Shirley, NY 11967, USA