

## Recombinant Mouse KLRD1 Protein, His-tagged

Cat. No. KLRD1-66M Lot. No. (See product label)

### SPECIFICATION

<b>Product Overview</b>	Recombinant Mouse KLRD1 Protein, fused to His-tag, was expressed in HEK293.
<b>Species</b>	Mouse
<b>Source</b>	HEK293
<b>Description</b>	<p>Predicted to enable HLA-E specific inhibitory MHC class Ib receptor activity; MHC protein complex binding activity; and protein antigen binding activity. Predicted to be involved in natural killer cell mediated immunity; regulation of leukocyte mediated cytotoxicity; and stimulatory C-type lectin receptor signaling pathway. Predicted to act upstream of or within adaptive immune response and innate immune response. Located in external side of plasma membrane. Orthologous to human KLRD1 (killer cell lectin like receptor D1).</p>
<b>Form</b>	PBS, pH 7.4.
<b>Molecular Mass</b>	18.1 kDa
<b>AA Sequence</b>	<p>INSFTIQNIQSTPSPTTTVEFQEVSECCVCLDKWVGHQCNCYFISKEEKSWKRSRDF  CASQNSSLLQPQSRNELSFMNFSQTFWIGMHYSEKRNAWLWEDGTVPSKDLFPE  FSVIRPEHCIVYSPSKSVSAESCENKNRYICKKLPPIHHHHHH</p>
<b>Endotoxin</b>	< 1.0 EU/μg of the protein as determined by the LAL method.
<b>Purity</b>	>90%

 Tel: 1-631-559-9269 1-516-512-3133

 Email: [info@creative-biomart.com](mailto:info@creative-biomart.com)  Fax: 1-631-938-8127

 45-1 Ramsey Road, Shirley, NY 11967, USA

<b>Storage</b>	Store it under sterile conditions at -20 to -80 centigrade. It is recommended that the protein be aliquoted for optimal storage. Avoid repeated freeze-thaw cycles.
----------------	---

<b>Concentration</b>	0.1 mg/ml
----------------------	-----------

## GENE INFORMATION

<b>Gene Name</b>	Klrd1 killer cell lectin-like receptor, subfamily D, member 1 [ Mus musculus (house mouse) ]
------------------	--

<b>Official Symbol</b>	KLRD1
------------------------	-------

<b>Synonyms</b>	CD94
-----------------	------

<b>Gene ID</b>	16643
----------------	-------

<b>mRNA Refseq</b>	NM_010654
--------------------	-----------

<b>Protein Refseq</b>	NP_034784
-----------------------	-----------

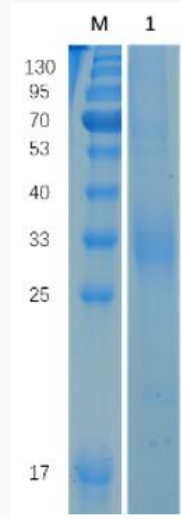
<b>UniProt ID</b>	O54707
-------------------	--------

 Tel: 1-631-559-9269 1-516-512-3133

 Email: [info@creative-biomart.com](mailto:info@creative-biomart.com)  Fax: 1-631-938-8127

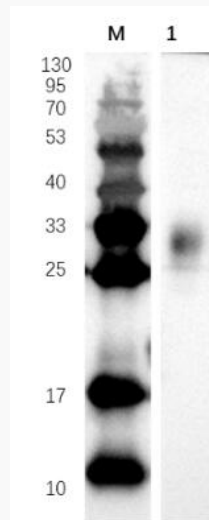
 45-1 Ramsey Road, Shirley, NY 11967, USA

**SDS-PAGE**



Reducing 12% SDS-PAGE analysis profile of purified Klrd1 (CBB stained).

**WB**



Reducing 12% wb analysis profile of purified Klrd1 (primary antibody: mouse Anti-His antibody).

 Tel: 1-631-559-9269 1-516-512-3133

 Email: [info@creative-biomart.com](mailto:info@creative-biomart.com)  Fax: 1-631-938-8127

 45-1 Ramsey Road, Shirley, NY 11967, USA