

Recombinant Human KLRF1 Protein, GST-tagged

Cat. No. KLRF1-4908H **Lot. No.** (See product label)

SPECIFICATION

Product Overview	Human KLRF1 full-length ORF (AAH98166.1, 1 a.a. - 124 a.a.) recombinant protein with GST-tag at N-terminal.
Species	Human
Source	Wheat Germ
Description	KLRF1, an activating homodimeric C-type lectin-like receptor (CTLR), is expressed on nearly all natural killer (NK) cells and stimulates their cytotoxicity and cytokine release (Kuttruff et al., 2009 [PubMed 18922855]).[supplied by OMIM, Oct 2009]
Molecular Mass	40.4 kDa
AA Sequence	MQDEERYMTLNVQSKKRSSAQTSQLTFKDYSVTLHWYKILLGISGTVNGILTTLISLI LLVSQGVLLKCQKGSCSNATQYEDTGDLKVNNGTRRNISNKDLCASRSADQTVPRP HFRLLYRKT
Applications	Enzyme-linked Immunoabsorbent Assay Western Blot (Recombinant protein) Antibody Production Protein Array
Notes	Best use within three months from the date of receipt of this protein.
Storage	Store at -80 centigrade. Aliquot to avoid repeated freezing and thawing.

 Tel: 1-631-559-9269 1-516-512-3133

 Email: info@creative-biomart.com  Fax: 1-631-938-8127

 45-1 Ramsey Road, Shirley, NY 11967, USA

Storage Buffer 50 mM Tris-HCl, 10 mM reduced Glutathione, pH=8.0 in the elution buffer.

GENE INFORMATION

Gene Name [KLRF1 killer cell lectin-like receptor subfamily F, member 1 \[Homo sapiens \]](#)

Official Symbol [KLRF1](#)

Synonyms KLRF1; killer cell lectin-like receptor subfamily F, member 1; killer cell lectin-like receptor subfamily F member 1; CLEC5C; NKp80; lectin-like receptor F1; activating coreceptor NKp80; killer cell lectin-like receptor F1; C-type lectin domain family 5 member C; MGC119907; MGC119908; MGC119909;

Gene ID [51348](#)

mRNA Refseq [NM_016523](#)

Protein Refseq [NP_057607](#)

MIM [605029](#)

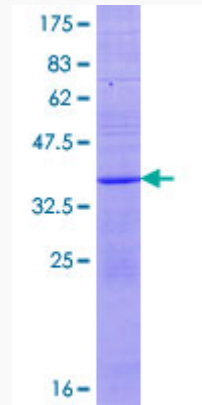
UniProt ID [Q9NZS2](#)

 Tel: 1-631-559-9269 1-516-512-3133

 Email: info@creative-biomart.com  Fax: 1-631-938-8127

 45-1 Ramsey Road, Shirley, NY 11967, USA

**Quality Control
Testing**



12.5% SDS-PAGE Stained with Coomassie Blue

 Tel: 1-631-559-9269 1-516-512-3133

 Email: info@creative-biomart.com  Fax: 1-631-938-8127

 45-1 Ramsey Road, Shirley, NY 11967, USA