

## Recombinant Human KLRG1 protein, hFc-tagged

Cat. No. KLRG1-6854H Lot. No. (See product label)

### SPECIFICATION

<b>Product Overview</b>	Recombinant Human KLRG1 protein(Q96E93-1)(Leu60-Phe195), fused with N-terminal hFc tag, was expressed in HEK293.
<b>Species</b>	Human
<b>Source</b>	HEK293
<b>ProteinLength</b>	Leu60-Phe195
<b>Tag</b>	N-hFc
<b>Form</b>	Supplied as 0.22µm filtered solution in PBS (pH 7.4).
<b>Bio-activity</b>	Immobilized Human KLRG1, hFc Tag at 1ug/ml (100ul/Well) on the plate. Dose response curve for Biotinylated Anti-KLRG1 Antibody, hFc Tag with the EC50 of 24.9ng/ml determined by ELISA.
<b>Molecular Mass</b>	The protein has a predicted MW of 42.8 kDa. Due to glycosylation, the protein migrates to 50-65 kDa based on Tris-Bis PAGE result.
<b>Endotoxin</b>	Less than 1EU per µg by the LAL method.
<b>Purity</b>	> 95% as determined by Tris-Bis PAGE;> 95% as determined by HPLC
<b>Storage</b>	Valid for 12 months from date of receipt when stored at -80°C. Recommend to aliquot

 Tel: 1-631-559-9269 1-516-512-3133

 Email: [info@creative-biomart.com](mailto:info@creative-biomart.com)  Fax: 1-631-938-8127

 45-1 Ramsey Road, Shirley, NY 11967, USA

the protein into smaller quantities for optimal storage. Please do not repeated freeze-thaw cycles.

**Reconstitution**

It is recommended that sterile water be added to the vial to prepare a stock solution of 0.2 ug/ul. Centrifuge the vial at 4°C before opening to recover the entire contents.

## GENE INFORMATION

**Gene Name**

KLRG1 killer cell lectin-like receptor subfamily G, member 1 [ Homo sapiens ]

**Official Symbol**

KLRG1

**Synonyms**

KLRG1; killer cell lectin-like receptor subfamily G, member 1; killer cell lectin-like receptor subfamily G member 1; 2F1; C type lectin domain family 15; member A; CLEC15A; MAFA; MAFA L; MAFA-like receptor; ITIM-containing receptor MAFA-L; C-type lectin domain family 15 member A; C-type lectin domain family 15, member A; mast cell function-associated antigen (ITIM-containing); MAFA-L; MAFA-2F1; MAFA-LIKE; MGC13600;

**Gene ID**

10219

**mRNA Refseq**

NM\_005810

**Protein Refseq**

NP\_005801

**MIM**

604874

**UniProt ID**

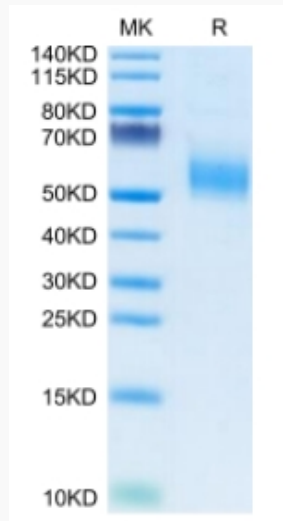
Q96E93

 Tel: 1-631-559-9269 1-516-512-3133

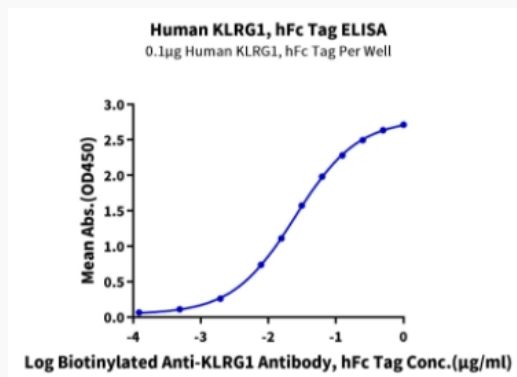
 Email: [info@creative-biomart.com](mailto:info@creative-biomart.com)  Fax: 1-631-938-8127

 45-1 Ramsey Road, Shirley, NY 11967, USA

**Tris-Bis PAGE**



**ELISA Data**



 Tel: 1-631-559-9269 1-516-512-3133

 Email: [info@creative-biomart.com](mailto:info@creative-biomart.com)  Fax: 1-631-938-8127

 45-1 Ramsey Road, Shirley, NY 11967, USA