

## Recombinant Cynomolgus KLRK1 protein, His-tagged

Cat. No. KLRK1-1533C Lot. No. (See product label)

### SPECIFICATION

<b>Product Overview</b>	Recombinant Cynomolgus KLRK1 protein(P61252)(Ile73-Val216), fused with N-terminal His tag, was expressed in HEK293.
<b>Species</b>	Cynomolgus
<b>Source</b>	N-His
<b>ProteinLength</b>	Ile73-Val216
<b>Tag</b>	N-His
<b>Form</b>	Lyophilized from 0.22µm filtered solution in PBS (pH 7.4). Normally 8% trehalose is added as protectant before lyophilization.
<b>Bio-activity</b>	Immobilized Cynomolgus NKG2D, His Tag at 0.5µg/ml (100µl/well) on the plate. Dose response curve for Anti-NKG2D Antibody, hFc Tag with the EC50 of 18.0ng/ml determined by ELISA.
<b>Molecular Mass</b>	The protein has a predicted MW of 17.48 kDa. Due to glycosylation, the protein migrates to 40-50 kDa based on Tris-Bis PAGE result.
<b>Endotoxin</b>	Less than 1EU per µg by the LAL method.
<b>Purity</b>	> 95% as determined by Tris-Bis PAGE; > 95% as determined by HPLC.

 Tel: 1-631-559-9269 1-516-512-3133

 Email: [info@creative-biomart.com](mailto:info@creative-biomart.com)  Fax: 1-631-938-8127

 45-1 Ramsey Road, Shirley, NY 11967, USA

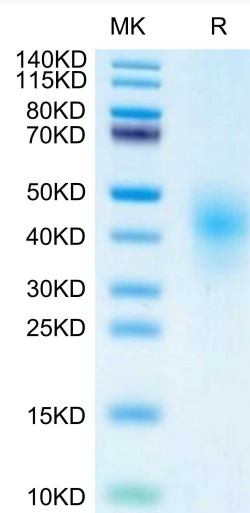
**Storage**

Reconstituted protein stable at -80°C for 12 months, 4°C for 1 week. Use a manual defrost freezer and avoid repeated freeze-thaw cycles.

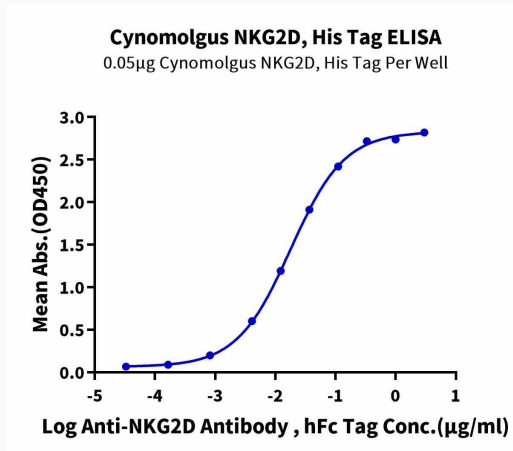
**Reconstitution**

Centrifuge tubes before opening. Reconstituting to a concentration more than 100 µg/ml is recommended. Dissolve the lyophilized protein in distilled water.

**Tris-Bis PAGE**



**ELISA**



Tel: 1-631-559-9269 1-516-512-3133

Email: [info@creative-biomart.com](mailto:info@creative-biomart.com) Fax: 1-631-938-8127

45-1 Ramsey Road, Shirley, NY 11967, USA