

Recombinant Human KLRK1 Protein, hlgG-His-tagged

Cat. No. KLRK1-215H **Lot. No.** (See product label)

SPECIFICATION

Product Overview	Recombinant Human KLRK1(73-216aa) fused with hlgG-His tag at C-terminal was expressed in Insect cells.
Species	Human
Source	Insect Cells
ProteinLength	73-216aa
Description	KLRK1, also known as NKG2D ligand 4 isoform 1, is a type II transmembrane glycoprotein having an extracellular lectin-like domain. This domain lacks the recognizable calcium-binding sites found in true C-type lectins and binds protein rather than carbohydrate ligands. It can send co-stimulatory signals to activate CD8 T cells. Also, it plays an important role in viral control. Cellular stress can induce ligands for KLRK1 which results in the cell susceptible to NK cell-mediated lysis.
Form	Liquid. In Phosphate Buffered Saline (pH 7.4) containing 10% glycerol.
Molecular Mass	43.9kDa (386aa) 40-57kDa (SDS-PAGE under reducing conditions.)
AA Sequence	ADPIWSAVFL NSLFNQEVQI PLTESYCGPC PKNWICYKNN CYQFFDESKN WYESQASCMS QNASLLKVYS KEDQDLLKLV KSYHWMGLVH IPTNGSWQWE DGSILSPNLL TIEMQKGDC ALYASSFKGY IENCSTPNTY ICMQRTVVPEP KSCDKTHTCP PCPAPELLGG PSVFLFPPKP KDTLMISRTP EVTCVVVDVS HEDPEVKFNW YVDGVEVHNA KTKPREEQYN

 Tel: 1-631-559-9269 1-516-512-3133

 Email: info@creative-biomart.com  Fax: 1-631-938-8127

 45-1 Ramsey Road, Shirley, NY 11967, USA

STYRVVSVLT VLHQDWLNGK EYKCKVSNKA LPAPIEKTIS
 KAKGQPREPQ VYTLPPSRDE LTKNQVSLTC LVKGFYPSDI AVEWESNGQP
 ENNYKTTTPPV LDSDGSFFLY SKLTVDKSRW QQGNVFSCSV
 MHEALHNHYT QKSLSLSPGK HHHHHH

Purity > 95% by SDS - PAGE

Applications SDS-PAGE

Storage Can be stored at +4 centigrade short term (1-2 weeks). For long term storage, aliquot and store at -20 centigrade or -70 centigrade. Avoid repeated freezing and thawing cycles.

Concentration 1mg/ml (determined by Absorbance at 280nm)

GENE INFORMATION

Gene Name [KLRK1 killer cell lectin-like receptor subfamily K, member 1 \[Homo sapiens \]](#)

Official Symbol [KLRK1](#)

Synonyms KLRK1; killer cell lectin-like receptor subfamily K, member 1; D12S2489E, DNA segment on chromosome 12 (unique) 2489 expressed sequence; NKG2-D type II integral membrane protein; CD314; KLR; NKG2 D; NKG2D; NK cell receptor D; NKG2-D-activating NK receptor; NKG2-D; D12S2489E; FLJ17759; FLJ75772;

Gene ID [22914](#)

mRNA Refseq [NM_007360](#)

Protein Refseq [NP_031386](#)

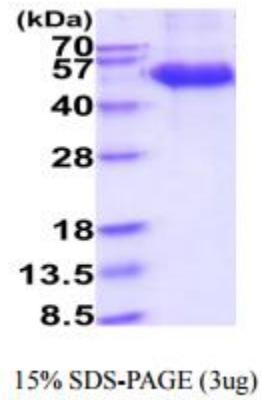
 Tel: 1-631-559-9269 1-516-512-3133

 Email: info@creative-biomart.com  Fax: 1-631-938-8127

 45-1 Ramsey Road, Shirley, NY 11967, USA

MIM 611817

UniProt ID P26718



 Tel: 1-631-559-9269 1-516-512-3133

 Email: info@creative-biomart.com  Fax: 1-631-938-8127

 45-1 Ramsey Road, Shirley, NY 11967, USA