

## Active Recombinant Human KLRK1 protein, hFc-tagged

**Cat. No.** KLRK1-350H    **Lot. No.** (See product label)

### SPECIFICATION

<b>Product Overview</b>	Active Recombinant Human KLRK1 protein(NP_031386.2)(Phe78-Val216) was expressed in CHO with the Fc region of human IgG1 at the N-terminus.
<b>Species</b>	Human
<b>Source</b>	CHO
<b>ProteinLength</b>	78-216 aa
<b>Form</b>	Lyophilized from sterile PBS, pH 7.4.
<b>Bio-activity</b>	Immobilized human ULBP1-His at 10 µg/ml (100 µl/well) can bind human S4-Fc3L3-NKG2D, The EC50 of human S4-Fc3L3-NKG2D is 0.39-0.91 µg/ml.
<b>Molecular Mass</b>	The recombinant human NKG2D/Fc comprises 418 amino acids and has a predicted molecular mass of 46.5 kDa. The apparent molecular mass of the protein is approximately 50-64 and 37 kDa in SDS-PAGE under reducing conditions.
<b>Endotoxin</b>	< 1.0 EU per µg of the protein as determined by the LAL method.
<b>Purity</b>	(81.4+13.9) % as determined by SDS-PAGE
<b>Storage</b>	Store it under sterile conditions at -20°C to -80°C upon receiving. Recommend to aliquot the protein into smaller quantities for optimal storage. Avoid repeated freeze-thaw cycles.

 Tel: 1-631-559-9269    1-516-512-3133

 Email: [info@creative-biomart.com](mailto:info@creative-biomart.com)     Fax: 1-631-938-8127

 45-1 Ramsey Road, Shirley, NY 11967, USA

**Reconstitution** It is recommended that sterile water be added to the vial to prepare a stock solution of 0.2 ug/ul. Centrifuge the vial at 4°C before opening to recover the entire contents.

## GENE INFORMATION

**Gene Name** [KLRK1 killer cell lectin-like receptor subfamily K, member 1 \[ Homo sapiens \]](#)

**Official Symbol** [KLRK1](#)

**Synonyms** KLRK1; killer cell lectin-like receptor subfamily K, member 1; D12S2489E, DNA segment on chromosome 12 (unique) 2489 expressed sequence; NKG2-D type II integral membrane protein; CD314; KLR; NKG2 D; NKG2D; NK cell receptor D; NKG2-D-activating NK receptor; NKG2-D; D12S2489E; FLJ17759; FLJ75772;

**Gene ID** [22914](#)

**mRNA Refseq** [NM\\_007360](#)

**Protein Refseq** [NP\\_031386](#)

**MIM** [611817](#)

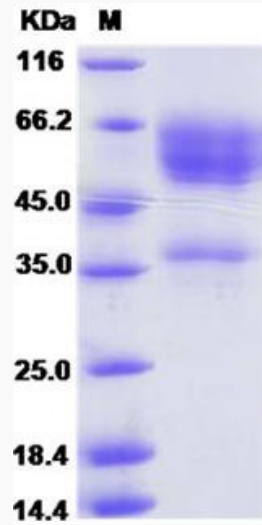
**UniProt ID** [P26718](#)

 Tel: 1-631-559-9269 1-516-512-3133

 Email: [info@creative-biomart.com](mailto:info@creative-biomart.com)  Fax: 1-631-938-8127

 45-1 Ramsey Road, Shirley, NY 11967, USA

**SDS-PAGE**



 Tel: 1-631-559-9269 1-516-512-3133

 Email: [info@creative-biomart.com](mailto:info@creative-biomart.com)  Fax: 1-631-938-8127

 45-1 Ramsey Road, Shirley, NY 11967, USA