

Recombinant Human KLRK1 protein, hFc-Flag-tagged

Cat. No. KLRK1-4633H Lot. No. (See product label)

SPECIFICATION

Product Overview	Recombinant Human KLRK1 protein(P26718)(Phe78-Val216), fused with N-terminal hFc-Flag tag, was expressed in HEK293.
Species	Human
Source	HEK293
ProteinLength	Phe78-Val216
Tag	N-hFc-Flag
Form	Lyophilized from 0.22µm filtered solution in PBS (pH 7.4). Normally 5% trehalose is added as protectant before lyophilization.
Bio-activity	Immobilized Human MICA, His Tag at 5µg/ml (100µl/Well) on the plate. Dose response curve for Human NKG2D, hFc Tag with the EC50 of 0.81µg/ml determined by ELISA.
Molecular Mass	The protein has a predicted MW of 43.4 kDa. Due to glycosylation, the protein migrates to 50-70 kDa based on Tris-Bis PAGE result.
Endotoxin	Less than 1EU per µg by the LAL method.
Purity	> 95% as determined by Tris-Bis PAGE; > 95% as determined by HPLC

 Tel: 1-631-559-9269 1-516-512-3133

 Email: info@creative-biomart.com  Fax: 1-631-938-8127

 45-1 Ramsey Road, Shirley, NY 11967, USA

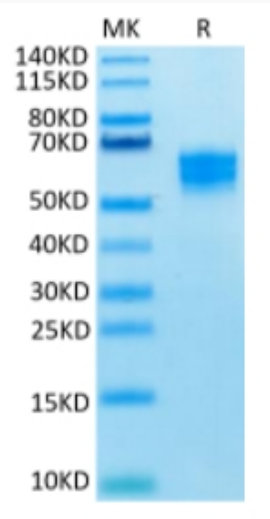
Storage	Reconstituted protein stable at -80°C for 12 months, 4°C for 1 week. Use a manual defrost freezer and avoid repeated freeze-thaw cycles.
Reconstitution	Centrifuge tubes before opening. Reconstituting to a concentration more than 100 µg/ml is recommended. Dissolve the lyophilized protein in distilled water.
GENE INFORMATION	
Gene Name	KLRK1 killer cell lectin-like receptor subfamily K, member 1 [Homo sapiens]
Official Symbol	KLRK1
Synonyms	KLRK1; killer cell lectin-like receptor subfamily K, member 1; D12S2489E, DNA segment on chromosome 12 (unique) 2489 expressed sequence; NKG2-D type II integral membrane protein; CD314; KLR; NKG2 D; NKG2D; NK cell receptor D; NKG2-D-activating NK receptor; NKG2-D; D12S2489E; FLJ17759; FLJ75772;
Gene ID	22914
mRNA Refseq	NM_007360
Protein Refseq	NP_031386
MIM	611817
UniProt ID	P26718

 Tel: 1-631-559-9269 1-516-512-3133

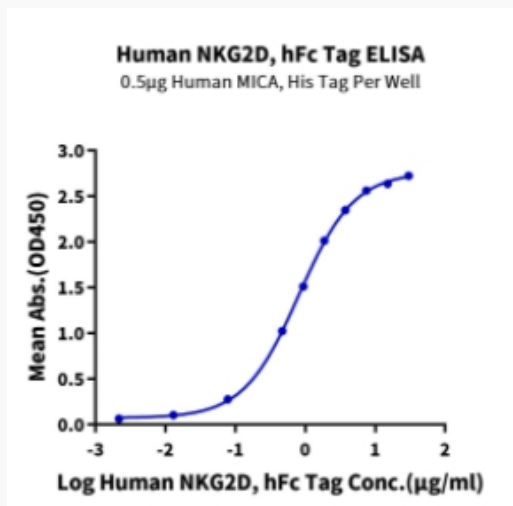
 Email: info@creative-biomart.com  Fax: 1-631-938-8127

 45-1 Ramsey Road, Shirley, NY 11967, USA

Tris-Bis PAGE



ELISA Data



 Tel: 1-631-559-9269 1-516-512-3133

 Email: info@creative-biomart.com  Fax: 1-631-938-8127

 45-1 Ramsey Road, Shirley, NY 11967, USA