

Recombinant Human KLRK1 Protein, GST-tagged

Cat. No. KLRK1-4905H Lot. No. (See product label)

SPECIFICATION

Product Overview	Human KLRK1 full-length ORF (NP_031386.1, 1 a.a. - 216 a.a.) recombinant protein with GST-tag at N-terminal.
Species	Human
Source	Wheat Germ
Description	Natural killer (NK) cells are lymphocytes that can mediate lysis of certain tumor cells and virus-infected cells without previous activation. They can also regulate specific humoral and cell-mediated immunity. NK cells preferentially express several calcium-dependent (C-type) lectins, which have been implicated in the regulation of NK cell function. This gene encodes a member of the NKG2 family, and the encoded transmembrane protein is characterized by a type II membrane orientation (extracellular C terminus) and the presence of a C-type lectin domain. The NKG2 gene family is located within the NK complex, a region that contains several C-type lectin genes preferentially expressed in NK cells. [provided by RefSeq]
Molecular Mass	51.7 kDa
AA Sequence	MGWIRGRRSRHSWEMSEFHNYNLDLKKSDFSTRWQKQRCPVVKSKRENASPPF FCCFIAMGIRFIIMVAIWSAVFLNSLNFQEVQIPLTESYCGPCPKNWICYKNNCYQF FDESKNWYESQASCMSQNASLLKVYSKEDQDLLKLVKSYHWMGLVHIPTNGSWQ WEDGSILSPNLLTIEMQKGDALYASSFKGYIENCSTPNTYICMQRTV
Applications	Enzyme-linked Immunoabsorbent Assay

 Tel: 1-631-559-9269 1-516-512-3133

 Email: info@creative-biomart.com  Fax: 1-631-938-8127

 45-1 Ramsey Road, Shirley, NY 11967, USA

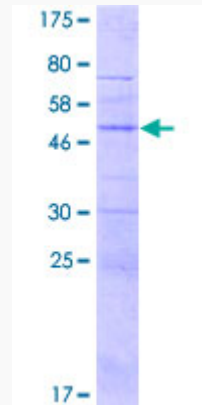
	Western Blot (Recombinant protein) Antibody Production Protein Array
Notes	Best use within three months from the date of receipt of this protein.
Storage	Store at -80 centigrade. Aliquot to avoid repeated freezing and thawing.
Storage Buffer	50 mM Tris-HCl, 10 mM reduced Glutathione, pH=8.0 in the elution buffer.
GENE INFORMATION	
Gene Name	KLRK1 killer cell lectin-like receptor subfamily K, member 1 [Homo sapiens]
Official Symbol	KLRK1
Synonyms	KLRK1; killer cell lectin-like receptor subfamily K, member 1; D12S2489E, DNA segment on chromosome 12 (unique) 2489 expressed sequence; NKG2-D type II integral membrane protein; CD314; KLR; NKG2 D; NKG2D; NK cell receptor D; NKG2-D-activating NK receptor; NKG2-D; D12S2489E; FLJ17759; FLJ75772;
Gene ID	22914
mRNA Refseq	NM_007360
Protein Refseq	NP_031386
MIM	611817
UniProt ID	P26718

 Tel: 1-631-559-9269 1-516-512-3133

 Email: info@creative-biomart.com  Fax: 1-631-938-8127

 45-1 Ramsey Road, Shirley, NY 11967, USA

**Quality Control
Testing**



12.5% SDS-PAGE Stained with Coomassie Blue

 Tel: 1-631-559-9269 1-516-512-3133

 Email: info@creative-biomart.com  Fax: 1-631-938-8127

 45-1 Ramsey Road, Shirley, NY 11967, USA