

Active Recombinant Human KLRK1 protein, His-tagged

Cat. No. KLRK1-8537H Lot. No. (See product label)

SPECIFICATION

Product Overview	Active Recombinant Human KLRK1 protein(NP_031386.2)(Phe78-Val216) was expressed in Insect Cells, fused with a polyhistide tag at the N-terminus.
Species	Human
Source	Insect Cells
ProteinLength	78-216 aa
Form	Lyophilized from sterile 20mM Tris, 500mM NaCl, pH 8.0, 10% gly.
Bio-activity	1. Immobilized human His-NKG2D (78-216) at 10 µg/ml (100 µl/well) can bind human ULBP1-Fch, The EC50 of human ULBP1-Fch is 0.04-0.08 µg/ml. 2. Immobilized human His-NKG2D (78-216) at 10 µg/ml (100 µl/well) can bind human MICB-Fch, The EC50 of human MICB-Fch is 15.9-37.1 ng/ml.
Molecular Mass	The recombinant human NKG2D consists of 155 amino acids and has a calculated molecular mass of 18.3 kDa. The recombinant protein migrates as an approximately 22 kDa band in SDS-PAGE under reducing conditions.
Endotoxin	< 1.0 EU per µg protein as determined by the LAL method.
Purity	> 90 % as determined by SDS-PAGE
Storage	Store it under sterile conditions at -20°C to -80°C upon receiving. Recommend to

 Tel: 1-631-559-9269 1-516-512-3133

 Email: info@creative-biomart.com  Fax: 1-631-938-8127

 45-1 Ramsey Road, Shirley, NY 11967, USA

aliquot the protein into smaller quantities for optimal storage. Avoid repeated freeze-thaw cycles.

Reconstitution

It is recommended that sterile water be added to the vial to prepare a stock solution of 0.2 ug/ul. Centrifuge the vial at 4°C before opening to recover the entire contents.

GENE INFORMATION

Gene Name [KLRK1 killer cell lectin-like receptor subfamily K, member 1 \[Homo sapiens \]](#)

Official Symbol [KLRK1](#)

Synonyms

KLRK1; killer cell lectin-like receptor subfamily K, member 1; D12S2489E, DNA segment on chromosome 12 (unique) 2489 expressed sequence; NKG2-D type II integral membrane protein; CD314; KLR; NKG2 D; NKG2D; NK cell receptor D; NKG2-D-activating NK receptor; NKG2-D; D12S2489E; FLJ17759; FLJ75772;

Gene ID [22914](#)

mRNA Refseq [NM_007360](#)

Protein Refseq [NP_031386](#)

MIM [611817](#)

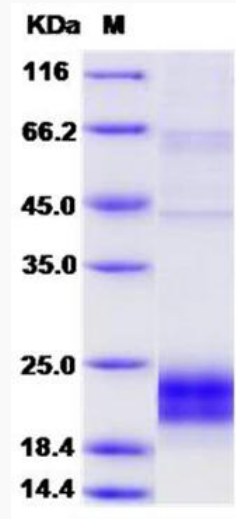
UniProt ID [P26718](#)

 Tel: 1-631-559-9269 1-516-512-3133

 Email: info@creative-biomart.com  Fax: 1-631-938-8127

 45-1 Ramsey Road, Shirley, NY 11967, USA

SDS-PAGE



 Tel: 1-631-559-9269 1-516-512-3133

 Email: info@creative-biomart.com  Fax: 1-631-938-8127

 45-1 Ramsey Road, Shirley, NY 11967, USA