

# Recombinant Full Length Human kynurenine 3-monooxygenase Protein, Avi&Flag tagged

Cat. No. KMO-015H Lot. No. (See product label)

## SPECIFICATION

<b>Product Overview</b>	Purified protein of Homo sapiens kynurenine 3-monooxygenase (kynurenine 3-hydroxylase) (KMO), with N-terminal AVI tag (MSGLNDIFEAQKIEWHEAIA) and C-terminal MYC/DDK tag, expressed in human cells.
<b>Species</b>	Human
<b>Source</b>	HEK293
<b>ProteinLength</b>	1-486 aa
<b>Description</b>	This gene encodes a mitochondrion outer membrane protein that catalyzes the hydroxylation of L-tryptophan metabolite, L-kynurenine, to form L-3-hydroxykynurenine. Studies in yeast identified this gene as a therapeutic target for Huntington disease.
<b>Molecular Mass</b>	61.6 kDa
<b>Purity</b>	> 80% as determined by SDS-PAGE and Coomassie blue staining
<b>Notes</b>	For testing in cell culture applications, please filter before use. Note that you may experience some loss of protein during the filtration process.
<b>Stability</b>	Stable for 12 months from the date of receipt of the product under proper storage and handling conditions. Avoid repeated freeze-thaw cycles.

 Tel: 1-631-559-9269 1-516-512-3133

 Email: [info@creative-biomart.com](mailto:info@creative-biomart.com)  Fax: 1-631-938-8127

 45-1 Ramsey Road, Shirley, NY 11967, USA

<b>Storage</b>	Store at -80 centigrade.
<b>Storage Buffer</b>	25 mM Tris-HCl, 100 mM glycine, pH 7.3, 10% glycerol
<b>Concentration</b>	> 0.05 µg/µL as determined by microplate BCA method
<b>GENE INFORMATION</b>	
<b>Gene Name</b>	KMO kynurenine 3-monooxygenase [ Homo sapiens (human) ]
<b>Official Symbol</b>	KMO
<b>Synonyms</b>	KMO; kynurenine 3-monooxygenase; dJ317G22.1; kynurenine 3-monooxygenase; kynurenine 3-hydroxylase; C 1.14.13.9
<b>Gene ID</b>	8564
<b>mRNA Refseq</b>	NM_003679
<b>Protein Refseq</b>	NP_003670
<b>MIM</b>	603538
<b>UniProt ID</b>	O15229

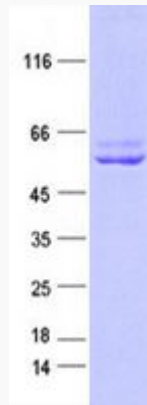
 Tel: 1-631-559-9269 1-516-512-3133

 Email: [info@creative-biomart.com](mailto:info@creative-biomart.com)  Fax: 1-631-938-8127

 45-1 Ramsey Road, Shirley, NY 11967, USA



SDS-PAGE



Tel: 1-631-559-9269 1-516-512-3133

Email: [info@creative-biomart.com](mailto:info@creative-biomart.com) Fax: 1-631-938-8127

45-1 Ramsey Road, Shirley, NY 11967, USA