

Active Recombinant Full Length Human KMO Protein, C-Flag-tagged

Cat. No. KMO-246HFL **Lot. No.** (See product label)

SPECIFICATION

Product Overview	Recombinant Full Length Human KMO Protein, fused to Flag-tag at C-terminus, was expressed in Mammalian cells.
Species	Human
Source	Mammalian Cells
Description	This gene encodes a mitochondrion outer membrane protein that catalyzes the hydroxylation of L-tryptophan metabolite, L-kynurenine, to form L-3-hydroxykynurenine. Studies in yeast identified this gene as a therapeutic target for Huntington disease.
Form	25 mM Tris HCl, pH 7.3, 100 mM glycine, 10% glycerol.
Bio-activity	The specific activity of KMO was determined by measuring the product 3-hydroxykynurenine formation from a conversion of Kynurenine. The reaction was carried out at 37 centigrade for 40 min in the buffer containing 100 mM Tris, pH8.0, 10 mM KCl, 1 mM NADPH, 3 mM glucose-6-phosphate, 1 units/ml of glucose-6 phosphate dehydrogenase, and 100 μM kynurenine as the substrate Surface Plasmon Resonance (SPR).
Molecular Mass	55.6 kDa
AA Sequence	MDSSVIQRKKVAVIGGGLVGS LQACFLAKRNFQIDVYEAREDTRVATFTRGRSINLAL

 Tel: 1-631-559-9269 1-516-512-3133

 Email: info@creative-biomart.com  Fax: 1-631-938-8127

 45-1 Ramsey Road, Shirley, NY 11967, USA

SHRGRQALKAVG LEDQIVSQGIPMRARMIHSLSGKKS AIPYGTKSQYILSVSRENLN
 KDLLTAAEKYPNVKMHFNHRLKCN PEEGMITVLGSDKVPKDVTCDLIVGCDGAYS
 TVRSHLMKKPRFDYSQQYIPHGYMELTIPPKNGDYAMEP NYLHIWPRNTFMMIALP
 NMNKSFTCTLFMPFEEFEKLLTSNDVVDFQKYFPDAIPLIGEKLLVQDFFLL PAQPM
 ISVKCSSFHFKSHCVLLGDAAHAIVPFFGQGMNAGFEDCLVFDELMDKFSNDLSLCL
 PVFSRLRI PDDHAISDLSMYNYIEMRAHVNSSWFIFQKNMERFLHAIMPSTFIPLYTM
 VTFSRIRYHEAVQRWHWQKK VINKGLFFLGSLIAISSTYLLIHYMSPRSFLCLRRPWN
 WIAHFRNTTCFPAKAVDSLEQISNLISRTRTRPLEQKLISEEDLAANDILDYKDDDDKV

Purity	> 80% as determined by SDS-PAGE and Coomassie blue staining.
Stability	Stable for 12 months from the date of receipt of the product under proper storage and handling conditions. Avoid repeated freeze-thaw cycles.
Storage	Store at -80 centigrade.
Concentration	>50 ug/mL as determined by microplate BCA method.
Preparation	Recombinant protein was captured through anti-DDK affinity column followed by conventional chromatography steps.
Protein Families	Druggable Genome
Protein Pathways	Metabolic pathways, Tryptophan metabolism
Full Length	Full L.

GENE INFORMATION

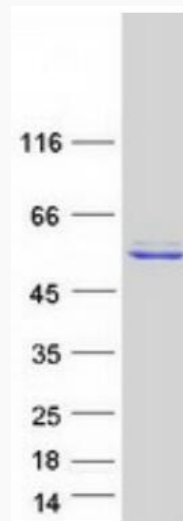
Gene Name [KMO kynurenine 3-monooxygenase \[Homo sapiens \(human\) \]](#)

 Tel: 1-631-559-9269 1-516-512-3133

 Email: info@creative-biomart.com  Fax: 1-631-938-8127

 45-1 Ramsey Road, Shirley, NY 11967, USA

Official Symbol	KMO
Synonyms	dJ317G22.1
Gene ID	8564
mRNA Refseq	NM_003679.5
Protein Refseq	NP_003670.2
MIM	603538
UniProt ID	O15229



Coomassie blue staining of purified KMO protein.

 Tel: 1-631-559-9269 1-516-512-3133

 Email: info@creative-biomart.com  Fax: 1-631-938-8127

 45-1 Ramsey Road, Shirley, NY 11967, USA